

## Anti-Phospho-MST1 (Thr183) Polyclonal Antibody

### Product Details

Ig Type:	IgG
Reactivity:	Human (predicted:Mouse,Rat,Chicken,Cow,Horse,Rabbit)
Molecular Weight:	Theoretical: 56 kDa.
Purification:	Protein A purified

### Applications

1. Paraformaldehyde-fixed, paraffin embedded (human liver carcinoma); Antigen retrieval by boiling in sodium citrate buffer (pH6.0) for 15 min; Block endogenous peroxidase by 3% hydrogen peroxide for 20 min; Blocking buffer (normal goat serum) at 37°C for 30 min; Antibody incubation with (MST1 (Thr183)) Polyclonal Antibody, Unconjugated (TMAB-01456) at 1:400 overnight at 4°C, followed by operating according to SP Kit (Rabbit) instructions and DAB staining.

2. HepG2 cell; 4% Paraformaldehyde-fixed; Triton X-100 at room temperature for 20 min; Blocking buffer (normal goat serum) at 37°C for 20 min; Antibody incubation with (Phospho-MST1 (Thr183)) polyclonal Antibody, Unconjugated (TMAB-01456) 1:25, 90 minutes at 37°C; followed by a conjugated Goat Anti-Rabbit IgG antibody at 37°C for 90 minutes, DAPI (blue) was used to stain the cell nucleus.

Verified Activity: 3. Blank control (black line): HepG2. Primary Antibody (green line): Rabbit Anti-Phospho-MST1 (Thr183) antibody (TMAB-01456)

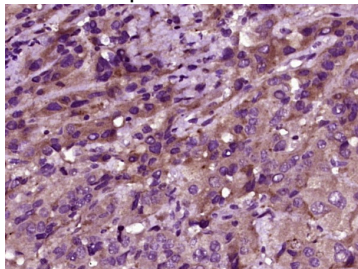
Dilution: 2 µg/Test;

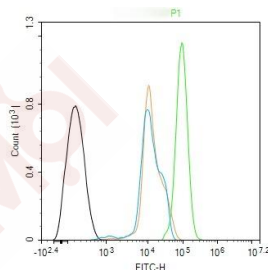
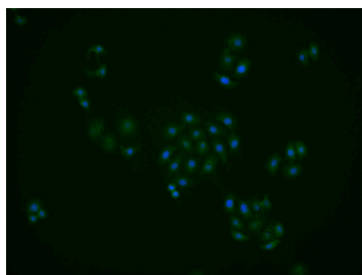
Secondary Antibody (white blue line): Goat anti-rabbit IgG-FITC

Dilution: 0.5 µg/Test.

Isotype control (orange line): Normal Rabbit IgG  
Protocol

The cells were fixed with 4% PFA (10 min at room temperature) and then permeabilized with 90% ice-cold methanol for 20 min at -20°C, The cells were then incubated in 5% BSA to block non-specific protein-protein interactions for 30 min at room temperature. Cells stained with Primary Antibody for 30 min at room temperature. The secondary antibody used for 40 min at room temperature.





Application: FCM,IF,IHC-Fr,IHC-P

Recommended FCM=2 µg/Test; IF=1:100-500; IHC-Fr=1:100-500; IHC-P=1:100-500

### Properties

Stability & Storage: Store at -20°C or -80°C for 12 months. Avoid repeated freeze-thaw cycles.

Shipping: Shipping with blue ice.

### Antigen Details

Immunogen: KLH conjugated Synthesised phosphopeptide: human Mst1 around the phosphorylation site of Thr183

Antigen Species: Human

Gene ID: 6789

Uniprot ID: Q13043

Synonyms: p-MST1 (T183);serine/threonine kinase 4;MST1 (p-T183);TIIAC;p-MST1 (Thr183);KRS2;MST1; YSK3;MST1 (p-Thr183)

Biology Area: Apoptosis,Hypertrophy,Other Kinases

### Research Background

The protein encoded by this gene is a cytoplasmic kinase that is structurally similar to the yeast Ste20p kinase, which acts upstream of the stress-induced mitogen-activated protein kinase cascade. The encoded protein can phosphorylate myelin basic protein and undergoes autophosphorylation. A caspase-cleaved fragment of the encoded protein has been shown to be capable of phosphorylating histone H2B. The particular phosphorylation catalyzed by this protein has been correlated with apoptosis, and it's possible that this protein induces the chromatin condensation observed in this process. [provided by RefSeq, Jul 2008]

**Inhibitor · Natural Compounds · Compound Libraries · Recombinant Proteins**

This product is for Research Use Only · Not for Human or Veterinary or Therapeutic Use

Tel:781-999-4286 E\_mail:info@targetmol.com Address:34 Washington Street,Wellesley Hills,MA 02481