

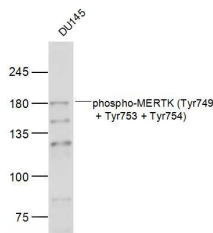
Anti-Phospho-MERTK/Mer (Tyr749, 753, 754) Polyclonal Antibody

Product Details

Ig Type:	IgG
Reactivity:	Human (predicted:Mouse,Rat)
Molecular Weight:	Theoretical: 180 kDa. Actual: 180 kDa.
Purification:	Protein A purified

Applications

Verified Activity:	Sample:
	DU145 (Human) Cell Lysate at 30 µg
	Primary: Anti-phospho-MERTK (Tyr749 + Tyr753 + Tyr754) (TMAB-01452) at 1/300 dilution
	Secondary: IRDye800CW Goat Anti-Rabbit IgG at 1/20000 dilution
	Predicted band size: 180 kDa
	Observed band size: 180 kDa



Application:	WB
Recommended	WB: 1:500-2000

Properties

Stability & Storage:	Store at -20°C or -80°C for 12 months. Avoid repeated freeze-thaw cycles.
Shipping:	Shipping with blue ice.

Antigen Details

Immunogen:	KLH conjugated synthesised phosphopeptide: human MERTK around the phosphorylation site of Tyr749 + Tyr753 + Tyr754
Antigen Species:	Human
Gene ID:	10461
Uniprot ID:	Q12866
Synonyms:	Tyro12;MERTK/Mer (p-Y749, 753, 754);c-Eyk;c-mer;p-MERTK/Mer (Tyr749, 753, 754);RP38;MERTK;MERTK/Mer (p-Tyr749, 753, 754);p-MERTK/Mer (Y749, 753, 754);MER;MGC133349
Biology Area:	Kinases,Visual system,Receptor Tyrosine Kinases

Research Background

The Major Facilitator Superfamily (MFS) is a large and diverse group of secondary transporters that includes uniporters, symporters, and antiporters. MFS proteins facilitate the transport across cytoplasmic or internal

A DRUG SCREENING EXPERT

membranes of a variety of substrates including ions, sugar phosphates, drugs, neurotransmitters, nucleosides, amino acids, and peptides. They do so using the electrochemical potential of the transported substrates. Uniporters transport a single substrate, while symporters and antiporters transport two substrates in the same or in opposite directions, respectively, across membranes. Peptide-transporters 2 [solute carrier family 15 (H⁺/peptide transporter), member 2; SLC15A2; PEPT2 ; Oligopeptide transporter, kidney isoform ; Kidney H⁽⁺⁾/peptide cotransporter;].

Inhibitor · Natural Compounds · Compound Libraries · Recombinant Proteins

This product is for Research Use Only· Not for Human or Veterinary or Therapeutic Use

Tel:781-999-4286 E_mail:info@targetmol.com Address:34 Washington Street,Wellesley Hills,MA 02481