

Anti-Phospho-IKBKA/IKBKB (Ser176, 180) Polyclonal Antibody

Product Details

Ig Type:	IgG
Reactivity:	Human, Mouse (predicted: Rat, Chicken, Dog, Pig, Cow, Horse)
Molecular Weight:	Theoretical: 85/87 kDa.
Purification:	Protein A purified

Applications

1. HeLa cell; 4% Paraformaldehyde-fixed; Triton X-100 at room temperature for 20 min; Blocking buffer (normal goat serum) at 37°C for 20 min; Antibody incubation with (Phospho-IKK alpha/beta (Ser176 + Ser180)) polyclonal Antibody, Unconjugated (TMAB-01431) 1:100, 90 minutes at 37°C; followed by a conjugated Goat Anti-Rabbit IgG antibody at 37°C for 90 minutes, DAPI (blue) was used to stain the cell nucleus.

2. Paraformaldehyde-fixed, paraffin embedded (Mouse brain); Antigen retrieval by boiling in sodium citrate buffer (pH6.0) for 15 min; Block endogenous peroxidase by 3% hydrogen peroxide for 20 min; Blocking buffer (normal goat serum) at 37°C for 30 min; Antibody incubation with (Phospho-IKK alpha/beta (Ser176 + Ser180)) Polyclonal Antibody, Unconjugated (TMAB-01431) at 1:400 overnight at 4°C, followed by operating according to SP Kit (Rabbit) instructions and DAB staining.

3. Paraformaldehyde-fixed, paraffin embedded (mouse brain); Antigen retrieval by boiling in sodium citrate buffer (pH6.0) for 15 min; Block endogenous peroxidase by 3% hydrogen peroxide for 20 min; Blocking buffer (normal goat serum) at 37°C for 30 min; Antibody incubation with (Phospho-IKK alpha, beta (Ser176 + Ser180)) Polyclonal Antibody, Unconjugated (TMAB-01431) at 1:200 overnight at 4°C, followed by operating according to SP Kit (Rabbit) instructions and DAB staining.

4. Blank control (black line): NIH/3T3. Primary Antibody (green line): Rabbit Anti-Phospho-IKK alpha/beta (Ser176 + Ser180) antibody (TMAB-01431)

Dilution: 1 µg/Test;

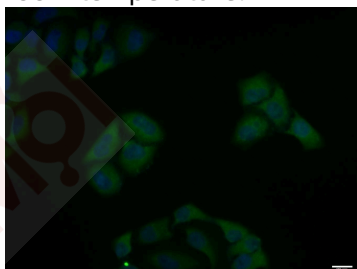
Secondary Antibody (white blue line): Goat anti-rabbit IgG-AF488

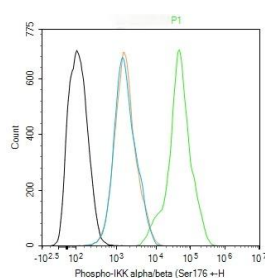
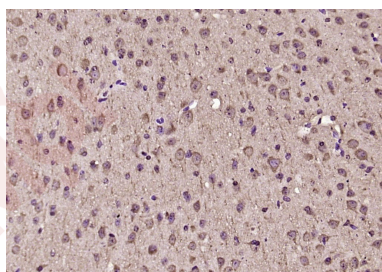
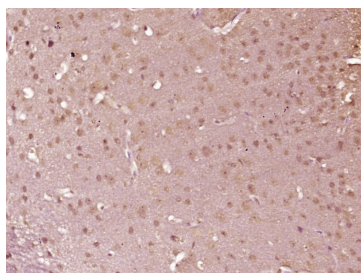
Dilution: 0.5 µg/Test.

Isotype control (orange line): Normal Rabbit IgG

Protocol

The cells were fixed with 4% PFA (10 min at room temperature) and then permeabilized with 90% ice-cold methanol for 20 min at -20°C, The cells were then incubated in 5% BSA to block non-specific protein-protein interactions for 30 min at room temperature. Cells stained with Primary Antibody for 30 min at room temperature. The secondary antibody used for 40 min at room temperature.





Application: FCM,ICC/IF,IF,IHC-Fr,IHC-P

Recommended FCM=1 µg/Test; ICC/IF=1:100-500; IF=1:100-500; IHC-Fr=1:100-500; IHC-P=1:100-500

Properties

Stability & Storage: Store at -20°C or -80°C for 12 months. Avoid repeated freeze-thaw cycles.

Shipping: Shipping with blue ice.

Antigen Details

Immunogen: KLH conjugated synthesised phosphopeptide: human IKK alpha/beta around the phosphorylation site of Ser176/Ser180

Antigen Species: Human

Gene ID: 1147

Uniprot ID: O15111

Synonyms: IKK A;Inhibitor Of Nuclear Factor Kappa B Kinase alpha Subunit;I Kappa B Kinase 1;I Kappa B Kinase alpha;IKK alpha/beta (p-Ser176, 180);Inhibitor of kappa light polypeptide gene enhancer in B cells kinase beta;Nuclear Factor Of Kappa Light Chain Gene Enhancer In B Cells Inhibitor;Nuclear factor NF kappa B inhibitor kinase beta;IKKA;IKBKB;Inhibitor of nuclear factor kappa B kinase subunit beta;Inhibitor of kappa light chain gene enhancer in B cells;Inhibitor Of Kappa Light Polypeptide Gene Enhancer In B Cells;IKK B;IKK2;IkappaB kinase;NFKBIKB; IKKalpha;IKK alpha/beta (p-S176, 180);IKK 2;Conserved Helix Loop Helix Ubiquitous Kinase;IKK a kinase;IKK1;Inhibitor of nuclear factor kappa B kinase beta subunit;IKK alpha;p-IKK alpha/beta (S176, 180);Nuclear Factor Kappa B Inhibitor Kinase alpha;IKKB;MGC131801; Conserved helix loop ubiquitous kinase;p-IKK alpha/beta (Ser176, 180);Nuclear factor NF kappa B inhibitor kinase alpha;CHUK;IKKAI kappa B kinase 2;Nuclear factor NFkappaB inhibitor kinase alpha;IKBKA;TCF16;IKK beta;IKK 1;NFKBIKA;Ikb kinase alpha subunit;CHUK1;I kappa B kinase beta

Biology Area: NFkB Pathway, Other Kinases, TLR Signaling, IKK, Inflammatory mediators, IKK

Research Background

Nuclear factor kappa B (NFkB) is a ubiquitous transcription factor and an essential mediator of gene expression during activation of immune and inflammatory responses. NFkB mediates the expression of a great variety of genes in response to extracellular stimuli including IL1, TNF alpha, and bacterial product LPS. NFkB is associated with IKB proteins in the cell cytoplasm, which inhibit NFkB activity. IKK is a serine protein kinase, and the IKK complex contains alpha and beta subunits (IKK alpha and IKK beta). IKK alpha and IKK beta interact with each other and both are essential for NFkB activation. IKK alpha specifically phosphorylates IkbBa. IKKa is expressed in variety of human tissues.

Inhibitor · Natural Compounds · Compound Libraries · Recombinant Proteins

This product is for Research Use Only · Not for Human or Veterinary or Therapeutic Use

Tel: 781-999-4286 E_mail: info@targetmol.com Address: 34 Washington Street, Wellesley Hills, MA 02481