

Anti-Phospho-IkB alpha/NFKBIA (Ser32, 36) Polyclonal Antibody

Product Details

Ig Type:	IgG
Reactivity:	Human,Rat (predicted:Mouse,Chicken,Dog,Pig,Cow,Rabbit,Sheep)
Molecular Weight:	Theoretical: 35 kDa. Actual: 37 kDa.
Purification:	Protein A purified

Applications

1. Sample:

Lane 1: HepG2 (Human) Cell Lysate at 30 µg

Lane 2: Hela (Human) Cell Lysate at 30 µg

Lane 3: Siha (Human) Cell Lysate at 30 µg

Lane 4: U251 (Human) Cell Lysate at 30 µg

Primary: Anti-phospho-IkB alpha (Ser32 + Ser36) (TMAB-01426) at 1/1000 dilution

Secondary: IRDye800CW Goat Anti-Rabbit IgG at 1/20000 dilution

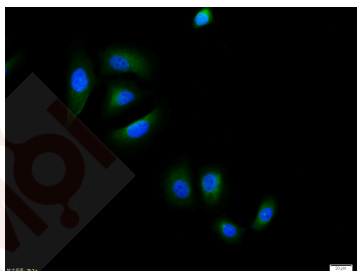
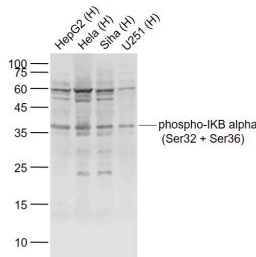
Predicted band size: 39 kDa

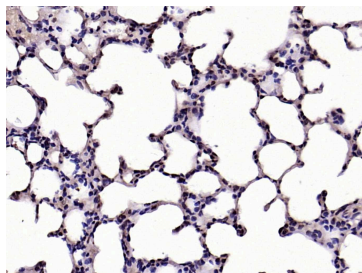
Observed band size: 37 kDa

Verified Activity:

2. HepG2 cell; 4% Paraformaldehyde-fixed; Triton X-100 at room temperature for 20 min; Blocking buffer (normal goat serum) at 37°C for 20 min; Antibody incubation with (phospho-IkB alpha (Ser32 + Ser36)) polyclonal Antibody, Unconjugated (TMAB-01426) 1:100, 90 minutes at 37°C; followed by a conjugated Goat Anti-Rabbit IgG antibody at 37°C for 90 minutes, DAPI (blue) was used to stain the cell nucleus.

3. Paraformaldehyde-fixed, paraffin embedded (Rat lung); Antigen retrieval by boiling in sodium citrate buffer (pH6.0) for 15 min; Block endogenous peroxidase by 3% hydrogen peroxide for 20 min; Blocking buffer (normal goat serum) at 37°C for 30 min; Antibody incubation with (phospho-IkB alpha (Ser32 + Ser36)) Polyclonal Antibody, Unconjugated (TMAB-01426) at 1:200 overnight at 4°C, followed by operating according to SP Kit (Rabbit) instructions and DAB staining.





Application: ICC/IF,IF,IHC-Fr,IHC-P,WB

Recommended ICC/IF=1:100-500; IF=1:100-500; IHC-Fr=1:100-500; IHC-P=1:100-500; WB=1:500-2000

Properties

Stability & Storage: Store at -20°C or -80°C for 12 months. Avoid repeated freeze-thaw cycles.

Shipping: Shipping with blue ice.

Antigen Details

Immunogen: KLH conjugated Synthesised phosphopeptide: human IκB alpha around the phosphorylation site of Ser32/36

Antigen Species: Human

Gene ID: 4792

Uniprot ID: P25963

Synonyms: IKBA;IκB alpha/NFKBIA (p-Ser32, 36);nuclear factor of κ light polypeptide gene enhancer in B-cells inhibitor, alpha;nuclear factor of kappa light polypeptide gene enhancer in B-cells inhibitor, α;IκB alpha/NFKBIA (p-S32, 36);NFKBI;p-IκB alpha/NFKBIA (Ser32, 36);nuclear factor of kappa light polypeptide gene enhancer in B-cells inhibitor, alpha;p-IκB alpha/NFKBIA (S32, 36);MAD-3;IκB α

Biology Area: NFκB pathway,NFκB pathway,TLR Signaling,NFκB Pathway

Research Background

This gene encodes a member of the NF-kappa-B inhibitor family, which contain multiple ankrin repeat domains. The encoded protein interacts with REL dimers to inhibit NF-kappa-B/REL complexes which are involved in inflammatory responses. The encoded protein moves between the cytoplasm and the nucleus via a nuclear localization signal and CRM1-mediated nuclear export. Mutations in this gene have been found in ectodermal dysplasia anhidrotic with T-cell immunodeficiency autosomal dominant disease. [provided by RefSeq, Aug 2011]

Inhibitor · Natural Compounds · Compound Libraries · Recombinant Proteins

This product is for Research Use Only· Not for Human or Veterinary or Therapeutic Use

Tel:781-999-4286 E_mail:info@targetmol.com Address:34 Washington Street,Wellesley Hills,MA 02481