

Anti-Phospho-IkB alpha/NFKBIA (Ser32, 36) Antibody (7S693)

Product Details

Ig Type:	IgG
Reactivity:	Human,Mouse,Rat
Molecular Weight:	Theoretical: 35 kDa.
Clone:	7S693
Purification:	Protein A purified

Applications

1. Blocking buffer: 5% NFDM/TBST
Primary dilution: 1:2000
Primary incubation condition: 2 hours at room temperature
Secondary: Goat Anti-Rabbit IgG H&L (HRP)
Lysate: (-): HeLa, (+): HeLa+ Human α -TNF (20ng/ml, 30 min)
Protein loading quantity: 20 μ g

Exposure time: 30 s
Predicted MW: 36 kDa
Observed MW: 36 kDa

2. Blocking buffer: 5% NFDM/TBST
Primary dilution: 1:2000
Primary incubation condition: 2 hours at room temperature
Secondary: Goat Anti-Rabbit IgG H&L (HRP)
Lysate: (-): C6, (+): C6+ Calyculin A (100nM, 30 min)
Protein loading quantity: 20 μ g

Exposure time: 60 s
Predicted MW: 36 kDa
Observed MW: 36 kDa

Verified Activity:

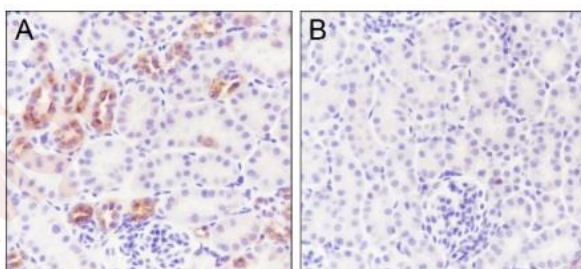
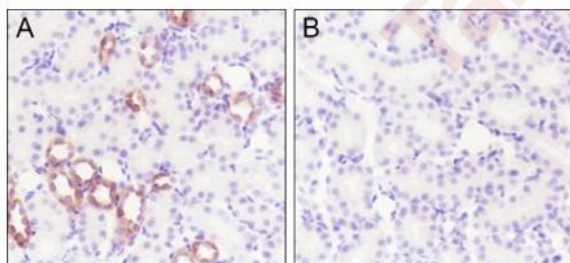
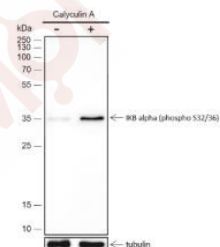
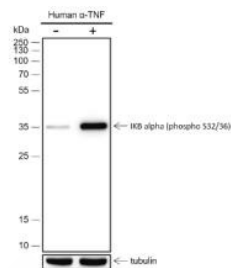
3. Tissue: (A) Rat kidney, (B) Rat kidney, then the tissue was incubated with alkaline phosphatase (50 U/ml) at 37°C for 1 hour
Section type: Formalin-fixed & Paraffin-embedded section
Retrieval method: High temperature and high pressure
Retrieval buffer: Tris/EDTA buffer, pH9.0
Primary dilution: 1:100

Primary incubation condition: 1 hour at room temperature
Secondary: Anti-Rabbit and Mouse Polymer HRP (Ready to use)
Counter stain: Hematoxylin (Blue)
Comment: Color brown is the positive signal for TMAB-01425

4. Tissue: (A) Mouse kidney, (B) Mouse kidney, then the tissue was incubated with alkaline phosphatase (50 U/ml) at 37°C for 1 hour
Section type: Formalin-fixed & Paraffin-embedded section
Retrieval method: High temperature and high pressure
Retrieval buffer: Tris/EDTA buffer, pH9.0
Primary dilution: 1:100
Primary incubation condition: 1 hour at room temperature
Secondary: Anti-Rabbit and Mouse Polymer HRP (Ready to use)

Counter stain: Hematoxylin (Blue)

Comment: Color brown is the positive signal for TMAB-01425



Application: IF,IHC-Fr,IHC-P,WB

Recommended IF=1:50-200; IHC-Fr=1:50-200; IHC-P=1:50-200; WB=1:500-2000

Properties

Stability & Storage: Store at -20°C or -80°C for 12 months. Avoid repeated freeze-thaw cycles.

Shipping: Shipping with blue ice.

Antigen Details

Immunogen:	KLH conjugated synthetic peptide: human phospho-IkB Alpha (Ser32 / Ser36)
Antigen Species:	Human
Gene ID:	4792
Uniprot ID:	P25963
Synonyms:	nuclear factor of kappa light polypeptide gene enhancer in B-cells inhibitor, alpha;p-IkB alpha/NFKBIA (S32, 36);p-IkB alpha/NFKBIA (Ser32, 36);MAD-3;IKBA;NFKBI;IkB α ;nuclear factor of kappa light polypeptide gene enhancer in B-cells inhibitor, α ;nuclear factor of κ light polypeptide gene enhancer in B-cells inhibitor, alpha;IkB alpha/NFKBIA (p-S32, 36);IkB alpha/NFKBIA (p-Ser32, 36)
Biology Area:	NFkB pathway,NFkB pathway,TLR Signaling,NFkB Pathway

Research Background

This gene encodes a member of the NF-kappa-B inhibitor family, which contain multiple ankrin repeat domains. The encoded protein interacts with REL dimers to inhibit NF-kappa-B/REL complexes which are involved in inflammatory responses. The encoded protein moves between the cytoplasm and the nucleus via a nuclear localization signal and CRM1-mediated nuclear export. Mutations in this gene have been found in ectodermal dysplasia anhidrotic with T-cell immunodeficiency autosomal dominant disease. [provided by RefSeq, Aug 2011]

Inhibitor · Natural Compounds · Compound Libraries · Recombinant Proteins

This product is for Research Use Only· Not for Human or Veterinary or Therapeutic Use

Tel:781-999-4286 E_mail:info@targetmol.com Address:34 Washington Street,Wellesley Hills,MA 02481