

## Anti-Phospho-IkB alpha/NFKBIA (Ser32) Antibody (7N349)

### Product Details

Ig Type:	IgG
Reactivity:	Human (predicted:Mouse)
Molecular Weight:	Theoretical: 36 kDa. Actual: 36 kDa.
Clone:	7N349
Purification:	Protein A purified

### Applications

1. Blank control: MCF7. Primary Antibody (green line): Rabbit Anti-phospho-IKB alpha (Ser32) antibody (TMAB-01424)  
Dilution: 2 µg/10<sup>6</sup> cells;  
Isotype Control Antibody (orange line): Rabbit IgG.  
Secondary Antibody: Goat anti-rabbit IgG-AF488  
Dilution: 1 µg/test.

#### Protocol

The cells were fixed with 4% PFA (10 min at room temperature) and then permeabilized with 90% ice-cold methanol for 20 min at -20°C. The cells were then incubated in 5% BSA to block non-specific protein-protein interactions for 30 min at room temperature. Cells stained with Primary Antibody for 30 min at room temperature. The secondary antibody used for 40 min at room temperature.

#### Verified Activity:

#### 2. Sample:

Lane 1: SK-Br-3 cell lysates

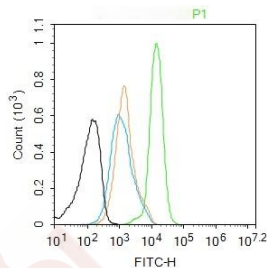
Primary: Anti-phospho-IKB alpha (Ser32) (TMAB-01424) at 1/500 dilution

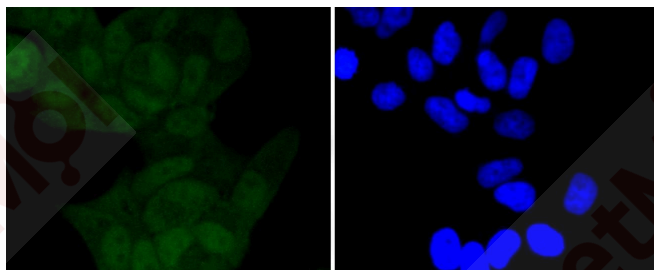
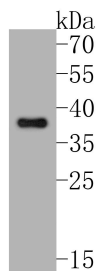
Secondary: Goat Anti-Rabbit IgG-HRP at 1:5000 dilution

Predicted band size: 36 kDa

Observed band size: 36 kDa

3. Hela cell; 4% Paraformaldehyde-fixed; Triton X-100 at room temperature for 20 min; Blocking buffer (normal goat serum) at 37°C for 20 min; Antibody incubation with (Phospho-IKB alpha (S32)) monoclonal Antibody, Unconjugated (TMAB-01424) 1:50, 90 minutes at 37°C; followed by a conjugated Goat Anti-Rabbit IgG antibody at 37°C for 90 minutes, DAPI (blue) was used to stain the cell nucleus.





Application: ICC/IF, WB  
Recommended: ICC/IF=1:100-500; WB=1:500-1000

### Properties

Stability & Storage: Store at -20°C or -80°C for 12 months. Avoid repeated freeze-thaw cycles.  
Shipping: Shipping with blue ice.

### Antigen Details

Immunogen: KLH conjugated Synthesised phosphopeptide: human IκB alpha around the phosphorylation site of Ser32  
Antigen Species: Human  
Gene ID: 4792  
Uniprot ID: P25963  
Synonyms: IκBA; p-IκB alpha/NFKBIA (Ser32); MAD-3; IκB alpha/NFKBIA (p-S32); p-IκB alpha/NFKBIA (S32); nuclear factor of kappa light polypeptide gene enhancer in B-cells inhibitor, alpha; IκB α; NFKBI; IκB alpha/NFKBIA (p-Ser32); nuclear factor of kappa light polypeptide gene enhancer in B-cells inhibitor, α; nuclear factor of κ light polypeptide gene enhancer in B-cells inhibitor, alpha  
Biology Area: NFκB pathway, NFκB pathway, TLR Signaling, NFκB Pathway

### Research Background

This gene encodes a member of the NF-kappa-B inhibitor family, which contain multiple ankrin repeat domains. The encoded protein interacts with REL dimers to inhibit NF-kappa-B/REL complexes which are involved in inflammatory responses. The encoded protein moves between the cytoplasm and the nucleus via a nuclear localization signal and CRM1-mediated nuclear export. Mutations in this gene have been found in ectodermal dysplasia anhidrotic with T-cell immunodeficiency autosomal dominant disease. [provided by RefSeq, Aug 2011]

**Inhibitor · Natural Compounds · Compound Libraries · Recombinant Proteins**

This product is for Research Use Only · Not for Human or Veterinary or Therapeutic Use

Tel: 781-999-4286 E\_mail: info@targetmol.com Address: 34 Washington Street, Wellesley Hills, MA 02481