

## Anti-Phospho-ERK1/2 (Thr183, Tyr185) Polyclonal Antibody

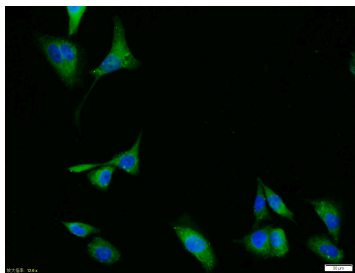
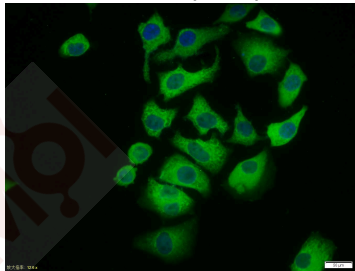
### Product Details

|                   |  |
|-------------------|--|
| Ig Type:          | IgG  |
| Reactivity:       | Human (predicted:Mouse,Rat,Chicken,Dog,Cow,Horse,Rabbit,GuineaPig) |
| Molecular Weight: | Theoretical: 42/44 kDa.  |
| Purification:     | Protein A purified   |

### Applications

#### Verified Activity:

1. Tissue/cell: Hela cell; 4% Paraformaldehyde-fixed; Triton X-100 at room temperature for 20 min; Blocking buffer (normal goat serum) at 37°C for 20 min; Antibody incubation with (phospho-ERK1 + 2 (Thr183/Tyr185)) polyclonal Antibody, Unconjugated (TMAB-01408) 1:100, 90 minutes at 37°C; followed by a FITC conjugated Goat Anti-Rabbit IgG antibody at 37°C for 90 minutes, DAPI (blue) was used to stain the cell nucleus.
2. Tissue/cell: HUVEC cell; 4% Paraformaldehyde-fixed; Triton X-100 at room temperature for 20 min; Blocking buffer (normal goat serum) at 37°C for 20 min; Antibody incubation with (phospho-ERK1 + 2 (Thr183/Tyr185)) Polyclonal Antibody, Unconjugated (TMAB-01408) 1:100, 90 minutes at 37°C; followed by a conjugated Goat Anti-Rabbit IgG antibody at 37°C for 90 minutes, DAPI (blue) was used to stain the cell nucleus.



|              |                 |
|--------------|-----------------|
| Application: | ICC/IF          |
| Recommended  | ICC/IF=1:50-200 |

### Properties

|                      |   |
|----------------------|---|
| Stability & Storage: | Store at -20°C or -80°C for 12 months. Avoid repeated freeze-thaw cycles. |
| Shipping:            | Shipping with blue ice.   |

### Antigen Details

|                  |  |
|------------------|--|
| Immunogen:       | KLH conjugated Synthesised phosphopeptide: mouse ERK1 around the phosphorylation site of Thr183/Tyr185   |
| Antigen Species: | Mouse  |
| Synonyms:        | p-ERK1/2 (Thr183, Tyr185);ERK1/2 (p-Thr183, Tyr185);PRKM3;p44-MAPK;HUMKER1A;Phospho-ERK1/2 (T183, Y185);P44ERK1;P44MAPK;HS44KDAP;p-ERK1/2 (T183, Y185);p44-ERK1;ERK-2;ERK1;ERK-1;ERK1/2 (p-T183, Y185);ERT2;Erk2 |
| Biology Area:    | Tangles & Tau,MAPK Pathway,Cytoplasmic   |

---

### Research Background

The protein encoded by this gene is a member of the MAPkinase family. MAP kinases, also known as extracellular signal-regulated kinases (ERKs), act in a signaling cascade that regulates various cellular processes such as proliferation, differentiation, and cell cycle progression in response to a variety of extracellular signals. This kinase is activated by upstream kinases, resulting in its translocation to the nucleus where it phosphorylates nuclear targets. Alternatively spliced transcript variants encoding different protein isoforms have been described. [provided by RefSeq, Jul 2008].

**Inhibitor · Natural Compounds · Compound Libraries · Recombinant Proteins**

This product is for Research Use Only · Not for Human or Veterinary or Therapeutic Use

Tel: 781-999-4286 E\_mail: info@targetmol.com Address: 34 Washington Street, Wellesley Hills, MA 02481