

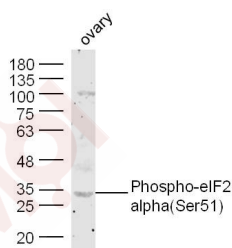
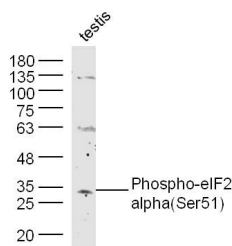
Anti-Phospho-EIF2S1 (Ser51) Polyclonal Antibody

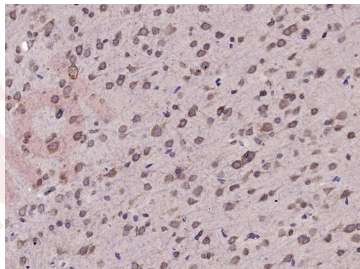
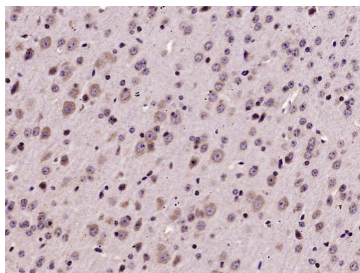
Product Details

Ig Type:	IgG
Reactivity:	Mouse,Rat (predicted:Human,Cow,Chicken)
Molecular Weight:	Theoretical: 36 kDa. Actual: 34 kDa.
Purification:	Protein A purified

Applications

1. Sample: Testis (Mouse) Lysate at 40 µg
Primary: Anti-Phospho-eIF2 alpha (Ser51) (TMAB-01404) at 1/300 dilution
Secondary: IRDye800CW Goat Anti-Rabbit IgG at 1/20000 dilution
Predicted band size: 36 kDa
Observed band size: 34 kDa
2. Sample: Ovary (Mouse) Lysate at 40 µg
Primary: Anti-Phospho-eIF2 alpha (Ser51) (TMAB-01404) at 1/300 dilution
Secondary: IRDye800CW Goat Anti-Rabbit IgG at 1/20000 dilution
Predicted band size: 36 kDa
Observed band size: 34 kDa
- Verified Activity:
3. Paraformaldehyde-fixed, paraffin embedded (Mouse brain); Antigen retrieval by microwave in sodium citrate buffer (pH6.0); Block endogenous peroxidase by 3% hydrogen peroxide for 30 minutes; Blocking buffer (3% BSA) at RT for 30 min; Antibody incubation with (Phospho-eIF2 alpha (Ser51)) Polyclonal Antibody, Unconjugated (TMAB-01404) at 1:400 overnight at 4°C, followed by conjugation to the secondary antibody (labeled with HRP) and DAB staining.
4. Paraformaldehyde-fixed, paraffin embedded (Rat brain); Antigen retrieval by microwave in sodium citrate buffer (pH6.0); Block endogenous peroxidase by 3% hydrogen peroxide for 30 minutes; Blocking buffer (3% BSA) at RT for 30 min; Antibody incubation with (Phospho-eIF2 alpha (Ser51)) Polyclonal Antibody, Unconjugated (TMAB-01404) at 1:400 overnight at 4°C, followed by conjugation to the secondary antibody (labeled with HRP) and DAB staining.





Application: IF,IHC-Fr,IHC-P,WB

Recommended WB: 1:500-2000; IHC-P: 1:100-500; IHC-Fr: 1:100-500; IF: 1:100-500

Properties

Stability & Storage: Store at -20°C or -80°C for 12 months. Avoid repeated freeze-thaw cycles.

Shipping: Shipping with blue ice.

Antigen Details

Immunogen: KLH conjugated synthesised phosphopeptide: human eIF2 alpha around the phosphorylation site of Ser51

Antigen Species: Human

Gene ID: 1965

Uniprot ID: P05198

Synonyms: EIF2; EIF 2A; EIF2S1 (p-S51); p-EIF2S1 (Ser51); IF2A_HUMAN; EIF2S1 (p-Ser51); EIF2 alpha; EIF 2 alpha; EIF 2; p-EIF2S1 (S51); Eukaryotic translation initiation factor 2 subunit 1 alpha 35kDa; EIF 2alpha; EIF2A; Phospho-EIF2S1 (S51)

Biology Area: RNAi,Regulation,Eukaryotic Initiation factors (eIF's)

Research Background

eIF2 alpha is a 36 kDa protein which is ubiquitously expressed in many cell types. The eIF2 protein, which is composed of three subunits (alpha, beta and gamma), is one of the key molecules in the initiation of translation. In mammalian cells, eIF2 alpha is phosphorylated at serine 51 (human EIF2 alpha, the equivalent residue in mouse is serine 52) by at least two kinases: the haem-controlled repressor (HCR) and the interferon inducible double stranded RNA-dependent protein kinase (PKR). Phosphorylation of eIF2 alpha blocks the GDP-GTP exchange activity of eIF2 beta, resulting in the suppression of protein synthesis. The phosphorylation of eIF2 alpha is an important regulatory process in protein synthesis.

Inhibitor · Natural Compounds · Compound Libraries · Recombinant Proteins

This product is for Research Use Only · Not for Human or Veterinary or Therapeutic Use

Tel:781-999-4286 E_mail:info@targetmol.com Address:34 Washington Street,Wellesley Hills,MA 02481