

## Anti-Phospho-DNM1L (Ser616) Polyclonal Antibody

### Product Details

Ig Type:	IgG
Reactivity:	Human, Mouse (predicted: Rat, Dog, Pig, Guinea Pig)
Molecular Weight:	Theoretical: 82 kDa.
Purification:	Protein A purified

### Applications

1. Blank control: U2-OS.

Primary Antibody (green line): Rabbit Anti-phospho-DNM1L (Ser616) antibody (TMAB-01402)

Dilution: 1 µg/Test;

Secondary Antibody: Goat anti-rabbit IgG-FITC

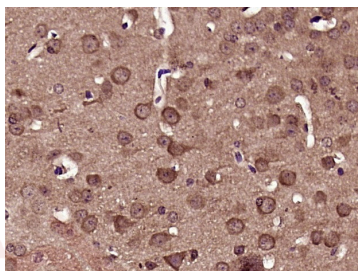
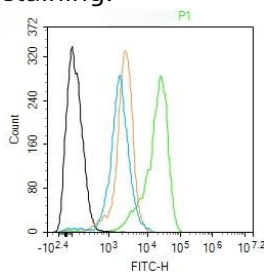
Dilution: 0.5 µg/Test.

Protocol

The cells were fixed with 4% PFA (10 min at room temperature) and then permeabilized with 90% ice-cold methanol for 20 min at -20°C. The cells were then incubated in 5% BSA to block non-specific protein-protein interactions for 30 min at room temperature. Cells stained with Primary Antibody for 30 min at room temperature. The secondary antibody used for 40 min at room temperature.

Verified Activity:

2. Paraformaldehyde-fixed, paraffin embedded (Mouse brain); Antigen retrieval by boiling in sodium citrate buffer (pH6.0) for 15 min; Block endogenous peroxidase by 3% hydrogen peroxide for 20 min; Blocking buffer (normal goat serum) at 37°C for 30 min; Antibody incubation with (phospho-DRP1 (Ser616)) Polyclonal Antibody, Unconjugated (TMAB-01402) at 1:400 overnight at 4°C, followed by operating according to SP Kit (Rabbit) instructions and DAB staining.



Application: FCM, IF, IHC-Fr, IHC-P

Recommended IHC-P: 1:100-500; IHC-Fr: 1:100-500; IF: 1:100-500; FCM: 1µg/Test

### Properties

Stability & Storage: Store at -20°C or -80°C for 12 months. Avoid repeated freeze-thaw cycles.

Shipping: Shipping with blue ice.

---

### Antigen Details

Immunogen: KLH conjugated synthesised phosphopeptide: human DRP1 around the phosphorylation site of Ser616

Antigen Species: Human

Gene ID: 10059

Uniprot ID: O00429

Synonyms: Dynamamin-related protein 1;DNM1L (p-Ser616);Dynamamin-like protein IV (HdynIV);p-DNM1L (S616);Dynamamin-1-like protein;DNM1L;p-DNM1L (Ser616);DNM1L (p-S616);Dynamamin family member proline-rich carboxyl-terminal domain less (Dymple);DRP1;Dynamamin-like protein;DLP1;Dynamamin-like protein 4;Dnm1p/Vps1p-like protein (DVLP)

Biology Area: Metabolism,Mitochondrial,Mitochondrial,Apoptosis,Mitochondrial markers,Neurodegenerative disease,Parkinson's disease,Mitochondrial

---

### Research Background

The protein encoded by this gene is a member of the dynamamin superfamily of GTPases. Members of the dynamamin-related subfamily, including the *S. cerevisiae* proteins Dnm1 and Vps1, contain the N-terminal tripartite GTPase domain but do not have the pleckstrin homology or proline-rich domains. This protein establishes mitochondrial morphology through a role in distributing mitochondrial tubules throughout the cytoplasm. The gene has 3 alternatively spliced transcripts encoding different isoforms. These transcripts are alternatively polyadenylated. [provided by RefSeq, Jul 2008].

**Inhibitor · Natural Compounds · Compound Libraries · Recombinant Proteins**

This product is for Research Use Only · Not for Human or Veterinary or Therapeutic Use

Tel:781-999-4286 E\_mail:info@targetmol.com Address:34 Washington Street,Wellesley Hills,MA 02481