

Anti-Phospho-ATG1 (Ser556) Polyclonal Antibody

Product Details

Ig Type:	IgG
Reactivity:	Human,Rat,Rabbit (predicted:Mouse,Pig,Horse)
Molecular Weight:	Theoretical: 116 kDa.
Purification:	Protein A purified

Applications

- phosphopeptide
non phosphopeptide
- Tissue/cell: rat brain tissue; 4% Paraformaldehyde-fixed and paraffin-embedded;
Antigen retrieval: citrate buffer (0.01M, pH6.0), Boiling bathing for 15 min; Block endogenous peroxidase by 3% Hydrogen peroxide for 30 min; Blocking buffer (normal goat serum) at 37°C for 20 min;

Incubation: Anti-Phospho-ATG1 (Ser556) Polyclonal Antibody, Unconjugated (TMAB-01393) 1:200, overnight at 4°C, followed by conjugation to the secondary antibody and DAb staining.

- Blank control: A549. Primary Antibody (green line): Rabbit Anti-Phospho-ATG1 (Ser556) antibody (TMAB-01393)

Dilution: 1 µg/10⁶ cells;

Isotype Control Antibody (orange line): Rabbit IgG.

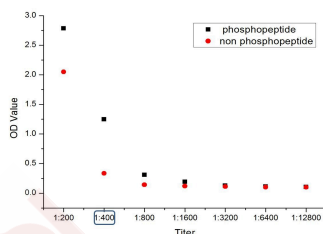
Verified Activity: Secondary Antibody: Goat anti-rabbit IgG-PE

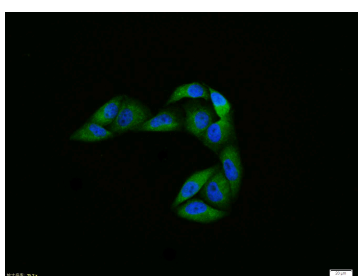
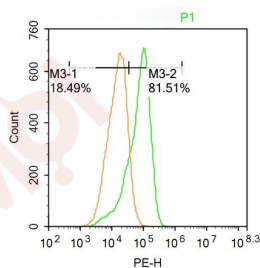
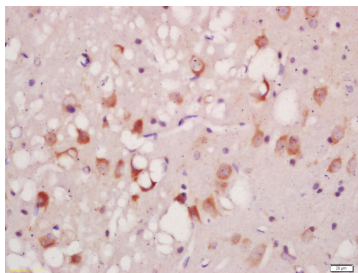
Dilution: 3 µg/test.

Protocol

The cells were fixed with 4% PFA (10 min at room temperature) and then permeabilized with 20% PBST for 20 min at room temperature. The cells were then incubated in 5% BSA to block non-specific protein-protein interactions for 30 min at room temperature. Cells stained with Primary Antibody for 30 min at room temperature. The secondary antibody used for 40 min at room temperature.

- Hela cell; 4% Paraformaldehyde-fixed; Triton X-100 at room temperature for 20 min; Blocking buffer (normal goat serum) at 37°C for 20 min; Antibody incubation with (Phospho-ATG1 (Ser556)) polyclonal Antibody, Unconjugated (TMAB-01393) 1:100, 90 minutes at 37°C; followed by a conjugated Goat Anti-Rabbit IgG antibody at 37°C for 90 minutes, DAPI (blue) was used to stain the cell nucleus.





Application: ELISA,FCM,ICC/IF,IF,IHC-Fr,IHC-P

Recommended ELISA=1:5000-10000; FCM=3 µg/Test; ICC/IF=1:100-500; IF=1:100-500; IHC-Fr=1:100-500; IHC-P=1:100-500

Properties

Stability & Storage: Store at -20°C or -80°C for 12 months. Avoid repeated freeze-thaw cycles.

Shipping: Shipping with blue ice.

Antigen Details

Immunogen: KLH conjugated Synthesised phosphopeptide: human ATG1/ULK1 around the phosphorylation site of Ser556

Antigen Species: Human

Gene ID: 8408

Uniprot ID: O75385

Synonyms: Autophagy-related protein 1;ATG1 (p-Ser556);Serine/threonine-protein kinase ATG1;p-ATG1 (Ser556);ATG1 (p-S556);p-ATG1 (S556);ATG1

Biology Area: Other Kinases,Neurogenesis,Mitophagy fission and fusion,Autophagy

Research Background

ULK1 belongs to the serine/threonine protein kinase family. It is involved in axon growth and plays an essential role in neurite branching during sensory axon outgrowth. Knockdown of ULK1 results in impaired endocytosis of nerve growth factor (NGF), excessive axon arborization, and severely stunted axon elongation indicating that ULK1 mediates a non clathrin coated endocytosis in sensory growth cones. Knockdown of ULK1 also inhibits the autophagic response. It appears to act as a convergence point for multiple signals that regulate autophagy, and in turn interacts with a large number of autophagy related (Atg) proteins.

Inhibitor · Natural Compounds · Compound Libraries · Recombinant Proteins

This product is for Research Use Only · Not for Human or Veterinary or Therapeutic Use

Tel:781-999-4286 E_mail:info@targetmol.com Address:34 Washington Street,Wellesley Hills,MA 02481