

Anti-Phospho-AQP2 (Ser256) Polyclonal Antibody

Product Details

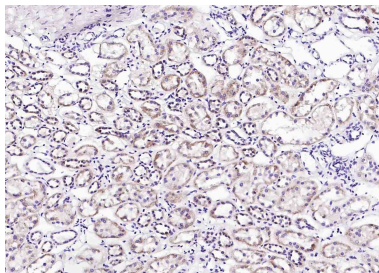
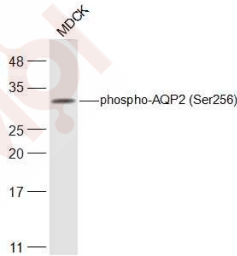
Ig Type:	IgG
Reactivity:	Human,Dog (predicted:Mouse,Rat,Chicken,Pig,Cow,Horse,Rabbit,Monkey)
Molecular Weight:	Theoretical: 29 kDa. Actual: 29 kDa.
Purification:	Protein A purified

Applications

1. Sample:
MDCK (Dog) Cell Lysate at 30 µg
Primary: Anti-phospho-AQP2 (Ser256) (TMAB-01391) at 1/500 dilution
Secondary: IRDye800CW Goat Anti-Rabbit IgG at 1/20000 dilution
Predicted band size: 29 kDa
Observed band size: 29 kDa

Verified Activity:

2. Paraformaldehyde-fixed, paraffin embedded (Human kidney); Antigen retrieval by boiling in sodium citrate buffer (pH6.0) for 15 min; Block endogenous peroxidase by 3% hydrogen peroxide for 20 min; Blocking buffer (normal goat serum) at 37°C for 30 min; Antibody incubation with (phospho-AQP2 (Ser256)) Polyclonal Antibody, Unconjugated (TMAB-01391) at 1:200 overnight at 4°C, followed by operating according to SP Kit (Rabbit) instructions and DAB staining.



Application:	IF,IHC-Fr,IHC-P,WB
Recommended	WB: 1:500-2000; IHC-P: 1:100-500; IHC-Fr: 1:100-500; IF: 1:100-500

A DRUG SCREENING EXPERT

Properties

Stability & Storage: Store at -20°C or -80°C for 12 months. Avoid repeated freeze-thaw cycles.

Shipping: Shipping with blue ice.

Antigen Details

Immunogen: KLH conjugated synthesised phosphopeptide: human AQP2 around the phosphorylation site of Ser256

Antigen Species: Human

Gene ID: 359

Uniprot ID: P41181

Synonyms: ADH water channel;AQP2 (p-S256);WCH-CD;AQP2 (p-Ser256);Collecting duct water channel protein;p-AQP2 (Ser256);Water channel protein for renal collecting duct;AQP2;Aquaporin-2;AQP-2;p-AQP2 (S256);Aquaporin-CD (AQP-CD)

Biology Area: Channels

Research Background

This gene encodes a water channel protein located in the kidney collecting tubule. It belongs to the MIP/aquaporin family, some members of which are clustered together on chromosome 12q13. Mutations in this gene have been linked to autosomal dominant, and recessive forms of nephrogenic diabetes insipidus. Belongs to the MIP/aquaporin (TC 1.A.8) family.

Inhibitor · Natural Compounds · Compound Libraries · Recombinant Proteins

This product is for Research Use Only · Not for Human or Veterinary or Therapeutic Use

Tel:781-999-4286 E_mail:info@targetmol.com Address:34 Washington Street,Wellesley Hills,MA 02481