

## Anti-Phospho-Alpha synuclein (Ser129) Polyclonal Antibody

### Product Details

**Ig Type:** IgG  
**Reactivity:** Human (predicted: Mouse, Rat, Rabbit, Pig, Sheep, Cow, Dog)  
**Molecular Weight:** Theoretical: 15 kDa. Actual: 17 kDa.  
**Purification:** Protein A purified

### Applications

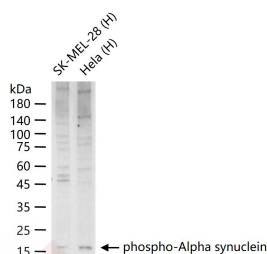
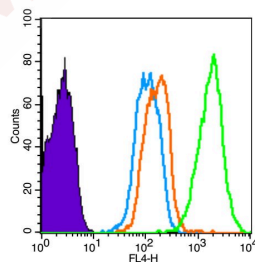
1. Blank control (Black line): HUVEC (Black).  
 Primary Antibody (green line): Rabbit Anti-phospho-Alpha synuclein (Ser129) antibody (TMAB-01385)  
 Dilution: 3 µg/10<sup>6</sup> cells;  
 Isotype Control Antibody (orange line): Rabbit IgG.  
 Secondary Antibody (white blue line): Goat anti-rabbit IgG-AF647  
 Dilution: 1 µg/test.

#### Verified Activity:

##### Protocol

The cells were fixed with 4% PFA (10 min at room temperature) and then permeabilized with 90% ice-cold methanol for 20 min at room temperature. The cells were then incubated in 5% BSA to block non-specific protein-protein interactions for 30 min at room temperature. Cells stained with Primary Antibody for 30 min at room temperature. The secondary antibody used for 40 min at room temperature.

2. 25 µg total protein per Lane of various lysates probed with phospho-Alpha synuclein polyclonal antibody, unconjugated (TMAB-01385) at 1:1000 dilution and 4°C overnight incubation. Followed by conjugated secondary antibody incubation at RT for 60 min.



**Application:** FCM, WB  
**Recommended:** WB: 1:500-2000; FCM: 1ug/Test

## A DRUG SCREENING EXPERT

---

### Properties

Stability & Storage: Store at -20°C or -80°C for 12 months. Avoid repeated freeze-thaw cycles.

Shipping: Shipping with blue ice.

---

### Antigen Details

Immunogen: KLH conjugated Synthesised phosphopeptide: human SNCA around the phosphorylation site of Ser129

Antigen Species: Human

Gene ID: 6622

Uniprot ID: P37840

Synonyms: Non-A  $\beta$  component of AD amyloid;Non-A4 component of amyloid precursor; $\alpha$ -synuclein; Alpha synuclein (p-Ser129);Alpha synuclein (p-S129);p-Alpha synuclein (S129);Alpha-synuclein;p-Alpha synuclein (Ser129);NACP;Snca;Non-A beta component of AD amyloid

Biology Area: Tangles & Tau,Synuclein

---

### Research Background

Alpha-synuclein is a member of the synuclein family, which also includes beta- and gamma-synuclein. Synucleins are abundantly expressed in the brain and alpha- and beta-synuclein inhibit phospholipase D2 selectively. SNCA may serve to integrate presynaptic signaling and membrane trafficking. Defects in SNCA have been implicated in the pathogenesis of Parkinson disease. SNCA peptides are a major component of amyloid plaques in the brains of patients with Alzheimer's disease. Alternatively spliced transcripts encoding different isoforms have been identified for this gene. [provided by RefSeq, Feb 2016].

**Inhibitor · Natural Compounds · Compound Libraries · Recombinant Proteins**

This product is for Research Use Only · Not for Human or Veterinary or Therapeutic Use

Tel:781-999-4286 E\_mail:info@targetmol.com Address:34 Washington Street,Wellesley Hills,MA 02481