

Anti-PGK1 Antibody (2Q169)

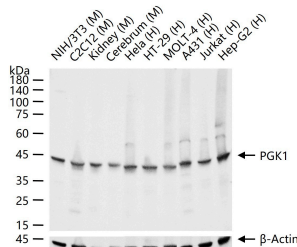
Product Details

Ig Type:	IgG2a, κ
Reactivity:	Human, Mouse
Molecular Weight:	Theoretical: 44 kDa. Actual: 44 kDa.
Clone:	2Q169
Purification:	Protein A purified

Applications

Verified Activity:

25 μ g total protein per Lane of various lysates probed with PGK1 monoclonal antibody, unconjugated (TMAB-01377) at 1:1000 dilution and 4°C overnight incubation. Followed by conjugated secondary antibody incubation at RT for 60 min.



Application: IF, IHC-Fr, IHC-P, WB

Recommended IF=1:100-500; IHC-Fr=1:100-500; IHC-P=1:100-500; WB=1:500-2000

Properties

Stability & Storage: Store at -20°C or -80°C for 12 months. Avoid repeated freeze-thaw cycles.

Shipping: Shipping with blue ice.

Antigen Details

Immunogen:	KLH conjugated synthetic peptide: human PGK1
Antigen Species:	Human
Gene ID:	5230
Uniprot ID:	P00558
Synonyms:	PGKA; Phosphoglycerate kinase 1; PGK1; Cell migration-inducing gene 10 protein; Primer recognition protein 2
Biology Area:	Energy Metabolism, Energy Metabolism, Carbohydrate metabolism, Blood, Metabolism of carbohydrates

Research Background

The protein encoded by this gene is a glycolytic enzyme that catalyzes the conversion of 1,3-diphosphoglycerate to 3-phosphoglycerate. The encoded protein may also act as a cofactor for polymerase alpha. This gene lies on the X-chromosome, while a related pseudogene also has been found on the X-chromosome and another on chromosome 19. [provided by RefSeq]

Inhibitor · Natural Compounds · Compound Libraries · Recombinant Proteins

This product is for Research Use Only · Not for Human or Veterinary or Therapeutic Use

Tel:781-999-4286 E_mail:info@targetmol.com Address:34 Washington Street,Wellesley Hills,MA 02481