

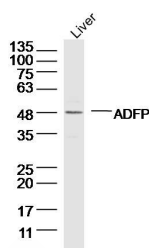
Anti-Perilipin-2 Polyclonal Antibody

Product Details

Ig Type:	IgG
Reactivity:	Human,Mouse (predicted:Rat)
Molecular Weight:	Theoretical: 48 kDa. Actual: 48 kDa.
Purification:	Protein A purified

Applications

Verified Activity:	Sample: Liver (Mouse) Lysate at 40 µg
	Primary: Anti-ADFP (TMAB-01370) at 1/300 dilution
	Secondary: IRDye800CW Goat Anti-Rabbit IgG at 1/20000 dilution
	Predicted band size: 48 kDa Observed band size: 48 kDa



Application:	IF,IHC-Fr,WB
Recommended	WB: 1:500-2000; IHC-Fr: 1:100-500; IF: 1:100-500

Properties

Stability & Storage:	Store at -20°C or -80°C for 12 months. Avoid repeated freeze-thaw cycles.
Shipping:	Shipping with blue ice.

Antigen Details

Immunogen:	KLH conjugated synthetic peptide: human ADFP
Antigen Species:	Human
Gene ID:	123
Uniprot ID:	Q99541
Synonyms:	PLIN 2;MGC10598;ADRP;Adipophilin;ADFP;PLIN2;Adipose differentiation related protein

Research Background

The protein encoded by this gene belongs to the perilipin family, members of which coat intracellular lipid storage droplets. This protein is associated with the lipid globule surface membrane material, and maybe involved in development and maintenance of adipose tissue. However, it is not restricted to adipocytes as previously thought, but is found in a wide range of cultured cell lines, including fibroblasts, endothelial and epithelial cells, and tissues, such as lactating mammary gland, adrenal cortex, Sertoli and Leydig cells, and hepatocytes in alcoholic liver

A DRUG SCREENING EXPERT

cirrhosis, suggesting that it may serve as a marker of lipid accumulation in diverse cell types and diseases. Alternatively spliced transcript variants have been found for this gene. [provided by RefSeq, Mar 2011]

Inhibitor · Natural Compounds · Compound Libraries · Recombinant Proteins

This product is for Research Use Only · Not for Human or Veterinary or Therapeutic Use

Tel:781-999-4286 E_mail:info@targetmol.com Address:34 Washington Street,Wellesley Hills,MA 02481