

Anti-PEPT1 Polyclonal Antibody

Product Details

Ig Type:	IgG
Reactivity:	Human,Mouse,Rat
Molecular Weight:	Theoretical: 79 kDa. Actual: 83 kDa.
Purification:	Protein A purified

Applications

1. Sample:

Lane 1: Liver (Mouse) Lysate at 40 µg

Lane 2: Liver (Rat) Lysate at 40 µg

Lane 3: Panc-1 (Human) Cell Lysate at 30 µg

Primary: Anti-SLC15A1 (TMAB-01367) at 1/1000 dilution

Secondary: IRDye800CW Goat Anti-Rabbit IgG at 1/20000 dilution

Predicted band size: 80 kDa

Observed band size: 83 kDa

2. Paraformaldehyde-fixed, paraffin embedded Mouse Kidney; Antigen retrieval by boiling in sodium citrate buffer (pH6.0) for 15 min; Antibody incubation with PEPT1 Polyclonal Antibody, Unconjugated (TMAB-01367) at 1:200 overnight at 4°C, followed by conjugation to the SP Kit (Rabbit) and DAB staining.

3. Paraformaldehyde-fixed, paraffin embedded Rat Kidney; Antigen retrieval by boiling in sodium citrate buffer (pH6.0) for 15 min; Antibody incubation with PEPT1 Polyclonal Antibody, Unconjugated (TMAB-01367) at 1:200 overnight at 4°C, followed by conjugation to the SP Kit (Rabbit) and DAB staining.

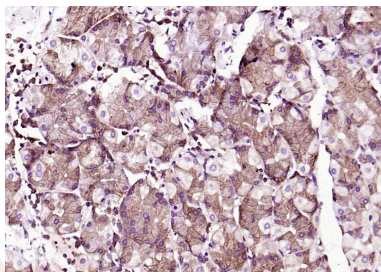
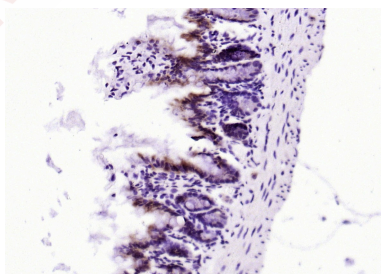
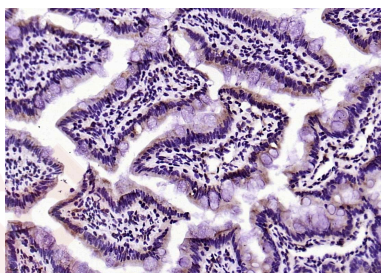
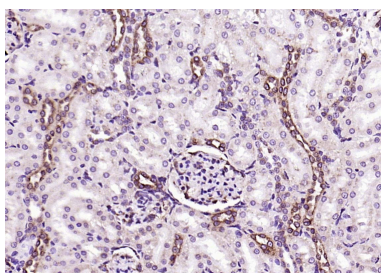
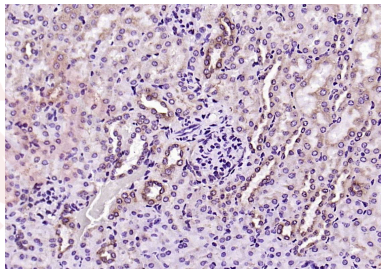
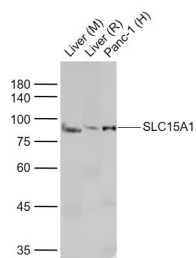
Verified Activity:

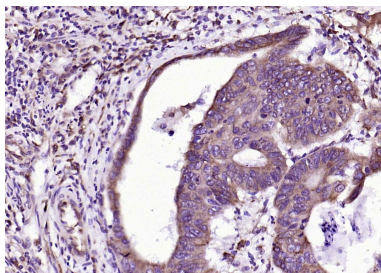
4. Paraformaldehyde-fixed, paraffin embedded Rat Small Intestine; Antigen retrieval by boiling in sodium citrate buffer (pH6.0) for 15 min; Antibody incubation with PEPT1 Polyclonal Antibody, Unconjugated (TMAB-01367) at 1:200 overnight at 4°C, followed by conjugation to the SP Kit (Rabbit) and DAB staining.

5. Paraformaldehyde-fixed, paraffin embedded Mouse Small Intestine; Antigen retrieval by boiling in sodium citrate buffer (pH6.0) for 15 min; Antibody incubation with PEPT1 Polyclonal Antibody, Unconjugated (TMAB-01367) at 1:200 overnight at 4°C, followed by conjugation to the SP Kit (Rabbit) and DAB staining.

6. Paraformaldehyde-fixed, paraffin embedded Human Gastric Cancer; Antigen retrieval by boiling in sodium citrate buffer (pH6.0) for 15 min; Antibody incubation with PEPT1 Polyclonal Antibody, Unconjugated (TMAB-01367) at 1:200 overnight at 4°C, followed by conjugation to the SP Kit (Rabbit) and DAB staining.

7. Paraformaldehyde-fixed, paraffin embedded Human Colon Cancer; Antigen retrieval by boiling in sodium citrate buffer (pH6.0) for 15 min; Antibody incubation with PEPT1 Polyclonal Antibody, Unconjugated (TMAB-01367) at 1:200 overnight at 4°C, followed by conjugation to the SP Kit (Rabbit) and DAB staining.





Application: IF,IHC-Fr,IHC-P,WB

Recommended WB: 1:500-1000; IHC-P: 1:50-200; IHC-Fr: 1:400-800; IF: 1:100-500

Properties

Stability & Storage: Store at -20°C or -80°C for 12 months. Avoid repeated freeze-thaw cycles.

Shipping: Shipping with blue ice.

Antigen Details

Immunogen: KLH conjugated synthetic peptide: human PEPT1

Antigen Species: Human

Gene ID: 6564

Uniprot ID: P46059

Synonyms: HPEPT1;SLC15A1;Oligopeptide transporter small intestine isoform;Peptide transporter 1; Oligopeptide transporter, small intestine isoform;Intestinal H(+)/peptide cotransporter;HPEPT1; Solute carrier family 15 member 1(SLC15A1);Solute carrier family 15(oligopeptide transporter) member 1;Human peptide transporter(HPEPT1) mRNA complete cds;peptide cotransporter; S15A1;Intestinal H;PEPT1

Biology Area: Amino acid metabolism,Amino Acids,Channels

Research Background

PEPT1(Oligopeptide transporter, small intestine isoform (Peptide transporter 1) (Intestinal H+)/peptide cotransporter) (Solute carrier family 15 member 1) Proton-coupled intake of oligopeptides of 2 to 4 amino acids with a preference for dipeptides. May constitute a major route for the absorption of protein digestion end-products. Subcellular Location: membrane; Multi-pass membrane protein. Tissue Specificity Intestine, kidney, liver and low in brain. Belongs to the PTR2/POT transporter (TC 2.A.17) family.

Inhibitor · Natural Compounds · Compound Libraries · Recombinant Proteins

This product is for Research Use Only · Not for Human or Veterinary or Therapeutic Use

Tel:781-999-4286 E_mail:info@targetmol.com Address:34 Washington Street,Wellesley Hills,MA 02481