

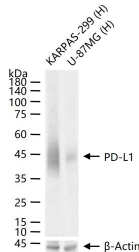
Anti-PD-L1 Antibody (2Z518)

Product Details

Ig Type:	IgG
Reactivity:	Human
Molecular Weight:	Theoretical: 33 kDa. Actual: 40-50 kDa.
Clone:	2Z518
Purification:	Protein A purified

Applications

Verified Activity: 25 µg total protein per Lane of various lysates probed with PD-L1 monoclonal antibody, unconjugated (TMAB-01363) at 1:1000 dilution and 4°C overnight incubation. Followed by conjugated secondary antibody incubation at RT for 60 min.



Application:	WB
Recommended	WB=1:500-2000

Properties

Stability & Storage: Store at -20°C or -80°C for 12 months. Avoid repeated freeze-thaw cycles.
Shipping: Shipping with blue ice.

Antigen Details

Immunogen:	KLH conjugated synthetic peptide: human PD-L1
Antigen Species:	Human
Gene ID:	29126
Uniprot ID:	Q9NZQ7
Synonyms:	A530045L16Rik;Pdcd1lg1;Pdcd1l1;CD274 molecule;B7h1;Pdl1
Biology Area:	Tumor antigens,Tumor-associated antigens,Non-lineage,Autoimmune,pd-l1

Research Background

This gene encodes an immune inhibitory receptor ligand that is expressed by hematopoietic and non-hematopoietic cells, such as T cells and B cells and various types of tumor cells. The encoded protein is a type I transmembrane protein that has immunoglobulin V-like and C-like domains. Interaction of this ligand with its receptor inhibits T-cell activation and cytokine production. During infection or inflammation of normal tissue, this interaction is important for preventing autoimmunity by maintaining homeostasis of the immune response. In tumor microenvironments,

A DRUG SCREENING EXPERT

interaction provides an immune escape for tumor cells through cytotoxic T-cell inactivation. Expression of this gene in tumor cells is considered to be prognostic in many types of human malignancies, including colon cancer and renal cell carcinoma. Alternative splicing results in multiple transcript variants. [provided by RefSeq, Sep 2015]

Inhibitor · Natural Compounds · Compound Libraries · Recombinant Proteins

This product is for Research Use Only · Not for Human or Veterinary or Therapeutic Use

Tel:781-999-4286 E_mail:info@targetmol.com Address:34 Washington Street,Wellesley Hills,MA 02481