

## Anti-PD-L1 Polyclonal Antibody 4

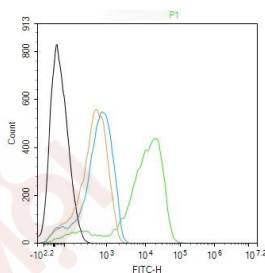
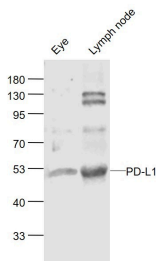
### Product Details

**Ig Type:** IgG  
**Reactivity:** Mouse (predicted:Human,Rat)  
**Molecular Weight:** Theoretical: 32 kDa.  
**Purification:** Protein A purified

### Applications

**1. Sample:**  
 Eye (Mouse) Lysate at 40 µg  
 Lymphnode (Mouse) Lysate at 40 µg  
**Primary:** Anti-PD-L1 (TMAB-01362) at 1/1000 dilution  
**Secondary:** IRDye800CW Goat Anti-Rabbit IgG at 1/20000 dilution  
**Predicted band size:** 48 kDa  
**Observed band size:** 50 kDa  
**2. Blank control (black line):** RAW264.7. **Primary Antibody (green line):** Rabbit Anti-PD-L1 antibody (TMAB-01362)  
**Verified Activity:** **Dilution:** 1 µg/Test;  
**Secondary Antibody (white blue line):** Goat anti-rabbit IgG-AF488  
**Dilution:** 0.5 µg/Test.  
**Isotype control (orange line):** Normal Rabbit IgG  
**Protocol**

The cells were fixed with 4% PFA (10 min at room temperature) and then permeabilized with 90% ice-cold methanol for 20 min at -20°C, The cells were then incubated in 5% BSA to block non-specific protein-protein interactions for 30 min at room temperature. Cells stained with Primary Antibody for 30 min at room temperature. The secondary antibody used for 40 min at room temperature.



**Application:** FCM,WB  
**Recommended** WB: 1:500-2000; FCM: 1ug/Test

## A DRUG SCREENING EXPERT

---

### Properties

Stability & Storage: Store at -20°C or -80°C for 12 months. Avoid repeated freeze-thaw cycles.

Shipping: Shipping with blue ice.

---

### Antigen Details

Immunogen: KLH conjugated synthetic peptide: mouse PD-L1

Antigen Species: Mouse

Gene ID: 60533

Uniprot ID: Q9EP73

Synonyms: Pdc1lg1;Pdc1l1;A530045L16Rik;Pdl1;B7h1;CD274 molecule

Biology Area: Tumor antigens,Tumor-associated antigens,Non-lineage,Autoimmune,pd-l1

---

### Research Background

This gene encodes an immune inhibitory receptor ligand that is expressed by hematopoietic and non-hematopoietic cells, such as T cells and B cells and various types of tumor cells. The encoded protein is a type I transmembrane protein that has immunoglobulin V-like and C-like domains. Interaction of this ligand with its receptor inhibits T-cell activation and cytokine production. During infection or inflammation of normal tissue, this interaction is important for preventing autoimmunity by maintaining homeostasis of the immune response. In tumor microenvironments, this interaction provides an immune escape for tumor cells through cytotoxic T-cell inactivation. Expression of this gene in tumor cells is considered to be prognostic in many types of human malignancies, including colon cancer and renal cell carcinoma. Alternative splicing results in multiple transcript variants. [provided by RefSeq, Sep 2015]

**Inhibitor · Natural Compounds · Compound Libraries · Recombinant Proteins**

This product is for Research Use Only · Not for Human or Veterinary or Therapeutic Use

Tel:781-999-4286 E\_mail:info@targetmol.com Address:34 Washington Street,Wellesley Hills,MA 02481

---