

Anti-PDK4 Polyclonal Antibody

Product Details

| | |
|-------------------|--------------------------------------|
| Ig Type: | IgG |
| Reactivity: | Human,Mouse,Rat |
| Molecular Weight: | Theoretical: 47 kDa. Actual: 45 kDa. |
| Purification: | Protein A purified |

Applications

Verified Activity:

1. Paraformaldehyde-fixed, paraffin embedded (rat brain); Antigen retrieval by boiling in sodium citrate buffer (pH6.0) for 15 min; Block endogenous peroxidase by 3% hydrogen peroxide for 20 min; Blocking buffer (normal goat serum) at 37°C for 30 min; Antibody incubation with (PDK4) Polyclonal Antibody, Unconjugated (TMAB-01358) at 1:200 overnight at 4°C, followed by operating according to SP Kit (Rabbit) instructions and DAB staining.

2. Paraformaldehyde-fixed, paraffin embedded (human myocardium); Antigen retrieval by boiling in sodium citrate buffer (pH6.0) for 15 min; Block endogenous peroxidase by 3% hydrogen peroxide for 20 min; Blocking buffer (normal goat serum) at 37°C for 30 min; Antibody incubation with (PDK4) Polyclonal Antibody, Unconjugated (TMAB-01358) at 1:200 overnight at 4°C, followed by operating according to SP Kit (Rabbit) instructions and DAB staining.

3. Sample:

Lane 1: Mouse Cerebrum tissue lysates

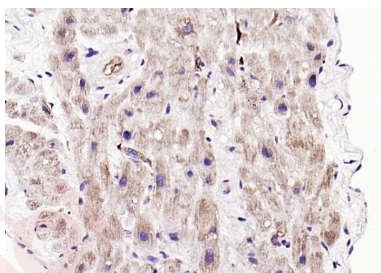
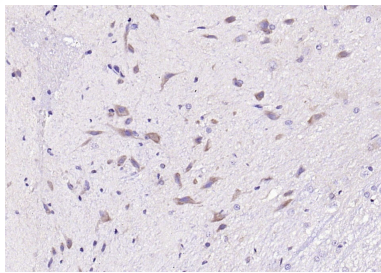
Lane 2: Rat Cerebrum tissue lysates

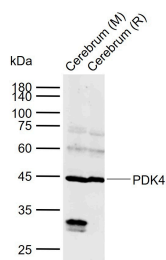
Primary: Anti-PDK4 (TMAB-01358) at 1/1000 dilution

Secondary: IRDye800CW Goat Anti-Rabbit IgG at 1/20000 dilution

Predicted band size: 47 kDa

Observed band size: 45 kDa





Application: IF,IHC-Fr,IHC-P,WB

Recommended WB: 1:500-2000; IHC-P: 1:100-500; IHC-Fr: 1:100-500; IF: 1:100-500

Properties

Stability & Storage: Store at -20°C or -80°C for 12 months. Avoid repeated freeze-thaw cycles.

Shipping: Shipping with blue ice.

Antigen Details

Immunogen: KLH conjugated synthetic peptide: human Pdk4

Antigen Species: Human

Gene ID: 5166

Uniprot ID: Q16654

Synonyms: AV005916;pyruvate dehydrogenase kinase 4

Biology Area: Energy Metabolism,Mitochondrial markers,Cancer,Energy Metabolism,Mitochondrial

Research Background

This gene is a member of the PDK/BCKDK protein kinase family and encodes a mitochondrial protein with a histidine kinase domain. This protein is located in the matrix of the mitochondria and inhibits the pyruvate dehydrogenase complex by phosphorylating one of its subunits, thereby contributing to the regulation of glucose metabolism. Expression of this gene is regulated by glucocorticoids, retinoic acid and insulin. [provided by RefSeq, Jul 2008].

Inhibitor · Natural Compounds · Compound Libraries · Recombinant Proteins

This product is for Research Use Only · Not for Human or Veterinary or Therapeutic Use

Tel:781-999-4286 E_mail:info@targetmol.com Address:34 Washington Street,Wellesley Hills,MA 02481