

Anti-PDGF-BB Polyclonal Antibody

Product Details

Ig Type:	IgG
Reactivity:	Human,Mouse,Rat (predicted:Dog,Cow,Horse,Rabbit,Sheep)
Molecular Weight:	Theoretical: 27 kDa. Actual: 27 kDa.
Purification:	Protein A purified

Applications

1. Sample:

Lane 1: Kidney (Mouse) Lysate at 40 µg

Lane 2: Cerebrum (Mouse) Lysate at 40 µg

Lane 3: Cerebrum (Rat) Lysate at 40 µg

Lane 4: Lung (Mouse) Lysate at 40 µg

Lane 5: Lung (Rat) Lysate at 40 µg

Lane 6: Huvec (Human) Cell Lysate at 30 µg

Lane 7: A431 (Human) Cell Lysate at 30 µg

Lane 8: MCF-7 (Human) Cell Lysate at 30 µg

Lane 9: U2os (Human) Cell Lysate at 30 µg

Primary: Anti-PDGF-B (TMAB-01352) at 1/1000 dilution

Secondary: IRDye800CW Goat Anti-Rabbit IgG at 1/20000 dilution

Predicted band size: 25 kDa

Observed band size: 28 kDa

2. Blank control (blue line): Hela (blue).

Primary Antibody (green line): Rabbit Anti-PDGF-B antibody (TMAB-01352)

Dilution: 1 µg/10⁶ cells;

Isotype Control Antibody (orange line): Rabbit IgG.

Secondary Antibody (white blue line): f(ab')₂ fragment goat anti-rabbit IgG-FITC

Dilution: 1 µg/test.

Protocol

The cells were fixed with 2% paraformaldehyde (10 min), then permeabilized with 90% ice-cold methanol for 30 min on ice. Cells stained with Primary Antibody for 30 min at room temperature. The cells were then incubated in 1 X PBS/2% BSA/10% goat serum to block non-specific protein-protein interactions followed by the antibody for 15 min at room temperature. The secondary antibody used for 40 min at room temperature.

3. Sample:

Stomach (Rat) Lysate at 40 µg

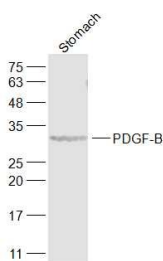
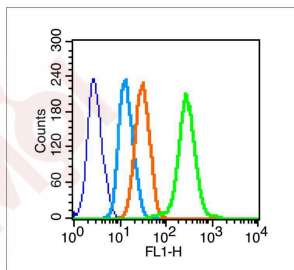
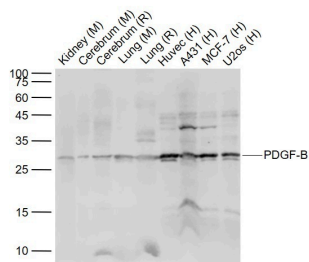
Primary: Anti-PDGF-B (TMAB-01352) at 1/1000 dilution

Secondary: IRDye800CW Goat Anti-Rabbit IgG at 1/20000 dilution

Predicted band size: 27 kDa

Observed band size: 32 kDa

Verified Activity:



Application: FCM,IF,IHC-Fr,WB

Recommended WB: 1:500-2000; IHC-Fr: 1:100-500; IF: 1:100-500; FCM: 1µg/Test

Properties

Stability & Storage: Store at -20°C or -80°C for 12 months. Avoid repeated freeze-thaw cycles.

Shipping: Shipping with blue ice.

Antigen Details

Immunogen: KLH conjugated synthetic peptide: human PDGF-B

Antigen Species: Human

Gene ID: 5155

Uniprot ID: P01127

Synonyms: PDGFBB;PDGF-BB

Biology Area: Response to hypoxia,PDGF,Inflammatory mediators,Serum Proteins,Angiogenesis and vasculogenesis,Hypoxia,Heart disease,PDGF

Research Background

Platelet-derived growth factor is a potent mitogen for cells of mesenchymal origin. Binding of this growth factor to its affinity receptor elicits a variety of cellular responses. It is released by platelets upon wounding and plays an important role in stimulating adjacent cells to grow and thereby heal the wound. [SUBUNIT] Antiparallel disulfide-linked dimer of nonidentical (A and B) chains. Homodimers of A and B chains are implicated in transformation processes. A-A and B-B, as well as A-B, dimers can bind to the PDGF receptor. Belongs to the PDGF/VEGF growth factor family.

Inhibitor · Natural Compounds · Compound Libraries · Recombinant Proteins

This product is for Research Use Only · Not for Human or Veterinary or Therapeutic Use

Tel:781-999-4286 E_mail:info@targetmol.com Address:34 Washington Street,Wellesley Hills,MA 02481