

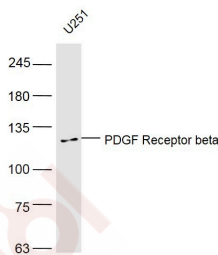
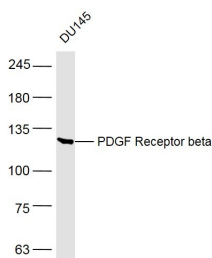
Anti-PDGF R beta/CD140b Polyclonal Antibody

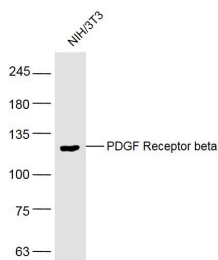
Product Details

Ig Type:	IgG
Reactivity:	Human,Rat (predicted:Mouse,Dog,Cow)
Molecular Weight:	Theoretical: 118 kDa. Actual: 118 kDa.
Purification:	Protein A purified

Applications

Verified Activity:	1. Sample:
	DU145 (Human) Cell Lysate at 30 µg
	Primary: Anti-PDGF Receptor beta (TMAB-01350) at 1/300 dilution
	Secondary: IRDye800CW Goat Anti-Rabbit IgG at 1/20000 dilution
	Predicted band size: 118 kDa
	Observed band size: 118 kDa
	2. Sample:
	U251 (Human) Cell Lysate at 30 µg
	Primary: Anti-PDGF Receptor beta (TMAB-01350) at 1/300 dilution
Secondary: IRDye800CW Goat Anti-Rabbit IgG at 1/20000 dilution	
Predicted band size: 118 kDa	
Observed band size: 118 kDa	
3. Sample:	
NIH/3T3 (Rat) Cell Lysate at 30 µg	
Primary: Anti-PDGF Receptor beta (TMAB-01350) at 1/300 dilution	
Secondary: IRDye800CW Goat Anti-Rabbit IgG at 1/20000 dilution	
Predicted band size: 118 kDa	
Observed band size: 118 kDa	





Application: IF,IHC-Fr,WB

Recommended WB: 1:500-2000; IHC-Fr: 1:100-500; IF: 1:100-500

Properties

Stability & Storage: Store at -20°C or -80°C for 12 months. Avoid repeated freeze-thaw cycles.

Shipping: Shipping with blue ice.

Antigen Details

Immunogen: KLH conjugated synthetic peptide: human PDGF-R-B

Antigen Species: Human

Gene ID: 5159

Uniprot ID: P09619

Synonyms: PDGF R β /CD140b;PDGF R β ;PDGFR;PDGF R beta;PDGFR- β ;JTK12;PDGFR1;PDGFR-2;CD140B;PDGFRB

Biology Area: PDGF,Growth factor receptors,Growth Factors,Inflammatory mediators,SARS Coronavirus,PDGF, Receptor Tyrosine Kinases

Research Background

This gene encodes a cell surface tyrosine kinase receptor for members of the platelet-derived growth factor family. These growth factors are mitogens for cells of mesenchymal origin. The identity of the growth factor bound to a receptor monomer determines whether the functional receptor is a homodimer or a heterodimer, composed of both platelet-derived growth factor receptor alpha and beta polypeptides. This gene is flanked on chromosome 5 by the genes for granulocyte-macrophage colony-stimulating factor and macrophage-colony stimulating factor receptor; all three genes may be implicated in the 5-q syndrome. A translocation between chromosomes 5 and 12, that fuses this gene to that of the translocation, ETV6, leukemia gene, results in chronic myeloproliferative disorder with eosinophilia. [provided by RefSeq].

Inhibitor · Natural Compounds · Compound Libraries · Recombinant Proteins

This product is for Research Use Only · Not for Human or Veterinary or Therapeutic Use

Tel:781-999-4286 E_mail:info@targetmol.com Address:34 Washington Street,Wellesley Hills,MA 02481