

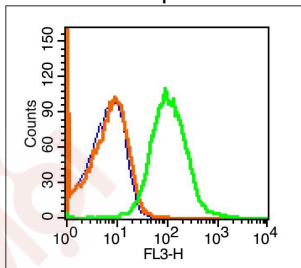
Anti-PD-1 Polyclonal Antibody

Product Details

Ig Type: IgG
Reactivity: Mouse (predicted:Human,Rat)
Molecular Weight: Theoretical: 32 kDa. Actual: 55-60 kDa.
Purification: Protein A purified

Applications

Blank control (blue line): Mouse spleen cells (blue).
Primary Antibody (green line): Rabbit Anti-PD-1/PE-CY7 Conjugated antibody (TMAB-01347-PE-CY7)
Dilution: 1 $\mu\text{g}/10^6$ cells;
Verified Activity: Isotype Control Antibody (orange line): Rabbit IgG-PE-CY7. Protocol
 The cells were fixed with 70% ice-cold methanol overnight at 4°C. The cells were then incubated in 1 X PBS/2% BSA/10% goat serum to block non-specific protein-protein interactions followed by the antibody for 15 min at room temperature. Cells stained with Primary Antibody for 30 min at room temperature.



Application: FCM
Recommended: FCM: 1 μg /test

Properties

Stability & Storage: Store at -20°C or -80°C for 12 months. Avoid repeated freeze-thaw cycles.
Shipping: Shipping with blue ice.

Antigen Details

Immunogen: KLH conjugated synthetic peptide: human PD-1
Antigen Species: Human
Gene ID: 5133
Uniprot ID: Q15116
Synonyms: PD1;CD279;hPD-1;programmed cell death 1;SLEB2;hPD-l;hSLE1;PD-1
Biology Area: CD,Regulatory T Cells,Death Receptors,CD markers,Apoptosis,Apoptosis

Research Background

Programmed cell death protein 1 (PDCD1) is an immune-inhibitory receptor expressed in activated T cells; it is involved in the regulation of T-cell functions, including those of effector CD8+ T cells. In addition, this protein can also promote the differentiation of CD4+ T cells into T regulatory cells. PDCD1 is expressed in many types of tumors including melanomas, and has demonstrated to play a role in anti-tumor immunity. Moreover, this protein has been shown to be involved in safeguarding against autoimmunity, however, it can also contribute to the inhibition of effective anti-tumor and anti-microbial immunity. [provided by RefSeq, Aug 2020]

Inhibitor · Natural Compounds · Compound Libraries · Recombinant Proteins

This product is for Research Use Only · Not for Human or Veterinary or Therapeutic Use

Tel:781-999-4286 E_mail:info@targetmol.com Address:34 Washington Street,Wellesley Hills,MA 02481