

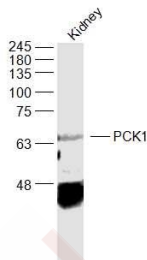
## Anti-PCK1 Polyclonal Antibody

### Product Details

Ig Type:	IgG
Reactivity:	Mouse (predicted:Human,Rat,Dog,Pig,Cow,Rabbit,Sheep)
Molecular Weight:	Theoretical: 69 kDa. Actual: 66 kDa.
Purification:	Protein A purified

### Applications

Sample:	Kidney (Mouse) Lysate at 40 µg
Verified Activity:	Primary: Anti-PCK1 (TMAB-01341) at 1/1000 dilution
	Secondary: IRDye800CW Goat Anti-Rabbit IgG at 1/20000 dilution
	Predicted band size: 69 kDa
	Observed band size: 66 kDa



Application:	WB
Recommended	WB: 1:500-2000

### Properties

Stability & Storage:	Store at -20°C or -80°C for 12 months. Avoid repeated freeze-thaw cycles.
Shipping:	Shipping with blue ice.

### Antigen Details

Immunogen:	KLH conjugated synthetic peptide: human PCK1
Antigen Species:	Human
Gene ID:	5105
Uniprot ID:	P35558
Synonyms:	PEPCK-C;Phosphoenolpyruvate carboxykinase, cytosolic [GTP];cytosolic [GTP];PCK1;Serine-protein kinase PCK1;PEPCK1
Biology Area:	Metabolism of carbohydrates,Diabetes associated,Cholesterol Metabolism,Carbohydrate metabolism,Energy Metabolism,Cholesterol Metabolism,Diabetes,Heart disease,Energy Metabolism

### Research Background

PCK1 is a main control point for the regulation of gluconeogenesis. This cytosolic enzyme, along with GTP, catalyzes

## A DRUG SCREENING EXPERT

---

the formation of phosphoenolpyruvate from oxaloacetate, with the release of carbon dioxide and GDP. The expression of the corresponding gene can be regulated by insulin, glucocorticoids, glucagon, cAMP, and diet. A mitochondrial isozyme has also been characterized.

**Inhibitor · Natural Compounds · Compound Libraries · Recombinant Proteins**

This product is for Research Use Only · Not for Human or Veterinary or Therapeutic Use

Tel:781-999-4286 E\_mail:info@targetmol.com Address:34 Washington Street,Wellesley Hills,MA 02481