

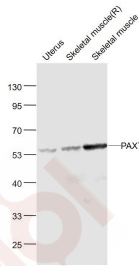
Anti-PAX7 Polyclonal Antibody 2

Product Details

Ig Type: IgG
Reactivity: Mouse,Rat (predicted:Human,Chicken,Pig,Cow,Horse,Rabbit,Sheep)
Molecular Weight: Theoretical: 55 kDa. Actual: 56 kDa.
Purification: Protein A purified

Applications

Sample:
 Uterus (Mouse) Lysate at 40 µg
 Skeletal muscle (Rat) Lysate at 40 µg
 Skeletal muscle (Mouse) Lysate at 40 µg
Verified Activity:
 Primary: Anti-PAX7 (TMAB-01340) at 1/1000 dilution
 Secondary: IRDye800CW Goat Anti-Rabbit IgG at 1/20000 dilution
 Predicted band size: 56 kDa
 Observed band size: 56 kDa



Application: WB
Recommended: WB: 1:500-2000

Properties

Stability & Storage: Store at -20°C or -80°C for 12 months. Avoid repeated freeze-thaw cycles.
Shipping: Shipping with blue ice.

Antigen Details

Immunogen: KLH conjugated synthetic peptide: human PAX7
Antigen Species: Human
Gene ID: 5081
Uniprot ID: P23759
Synonyms: PAX7;PAX7/FKHR fusion gene, included;Paired domain gene HuP1;RGD1564360;Paired box protein Pax-7;Paired box gene 7;Paired domain gene 7;PAX7B;HUP1;FLJ37460;PAX7 transcriptional factor;Paired box homeotic gene 7;Paired box 7;OTTHUMP00000002534
Biology Area: Ectoderm,Muscle,PAX,Ectoderm,Myogenesis

Research Background

PAX7 is a member of the paired box (PAX) family of transcription factors. Members of this gene family typically contain a paired box domain, an octapeptide, and a paired-type homeodomain. These genes play critical roles during fetal development and cancer growth. The specific function of PAX7 is unknown but it is speculated to be involved in tumor suppression since fusion of this gene with a forkhead domain family member has been associated with alveolar rhabdomyosarcoma. Alternative splicing in this gene has produced two known products but the biological significance of the variants is unknown.

Inhibitor · Natural Compounds · Compound Libraries · Recombinant Proteins

This product is for Research Use Only · Not for Human or Veterinary or Therapeutic Use

Tel:781-999-4286 E_mail:info@targetmol.com Address:34 Washington Street,Wellesley Hills,MA 02481