

Anti-PARP1 Polyclonal Antibody

Product Details

Ig Type:	IgG
Reactivity:	Human,Mouse,Rat (predicted:Pig,Cow,Rabbit,Sheep)
Molecular Weight:	Theoretical: 112 kDa. Actual: 112 kDa.
Purification:	Protein A purified

Applications

1. Paraformaldehyde-fixed, paraffin embedded (rat brain); Antigen retrieval by boiling in sodium citrate buffer (pH6.0) for 15 min; Block endogenous peroxidase by 3% hydrogen peroxide for 20 min; Blocking buffer (normal goat serum) at 37°C for 30 min; Antibody incubation with (PARP1) Polyclonal Antibody, Unconjugated (TMAB-01334) at 1:200 overnight at 4°C, followed by operating according to SP Kit (Rabbit) instructions and DAB staining.

2. Blank control: 293T.

Primary Antibody (green line): Rabbit Anti-PARP1 antibody (TMAB-01334)

Dilution: 1 µg/10⁶ cells;

Isotype Control Antibody (orange line): Rabbit IgG.

Secondary Antibody: Goat anti-rabbit IgG-AF647

Dilution: 1 µg/test.

Protocol

The cells were fixed with 4% PFA (10 min at room temperature) and then permeabilized with 90% ice-cold methanol for 20 min at -20°C. The cells were then incubated in 5% BSA to block non-specific protein-protein interactions for 30 min at room temperature. Cells stained with Primary Antibody for 30 min at room temperature. The secondary antibody used for 40 min at room temperature.

Verified Activity:

3. Sample:

Lane 1: K562 (Human) Cell Lysate at 30 µg

Lane 2: SH-SY5Y (Human) Cell Lysate at 30 µg

Lane 3: U251 (Human) Cell Lysate at 30 µg

Lane 4: Hela (Human) Cell Lysate at 30 µg

Primary: Anti-PARP1 (TMAB-01334) at 1/1000 dilution

Secondary: IRDye800CW Goat Anti-Rabbit IgG at 1/20000 dilution

Predicted band size: 115 kDa

Observed band size: 115 kDa

4. Sample:

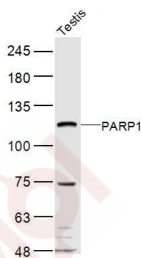
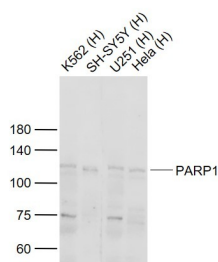
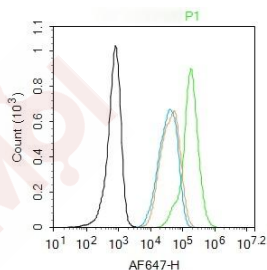
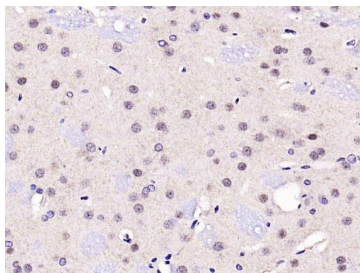
Testis (Mouse) Lysate at 40 µg

Primary: Anti-PARP1 (TMAB-01334) at 1/300 dilution

Secondary: IRDye800CW Goat Anti-Rabbit IgG at 1/20000 dilution

Predicted band size: 112 kDa

Observed band size: 112 kDa



Application: FCM,IF,IHC-Fr,IHC-P,WB

Recommended WB: 1:500-2000; IHC-P: 1:100-500; IHC-Fr: 1:100-500; IF: 1:100-500; FCM: 1ug/Test

Properties

Stability & Storage: Store at -20°C or -80°C for 12 months. Avoid repeated freeze-thaw cycles.

Shipping: Shipping with blue ice.

Antigen Details

Immunogen: KLH conjugated synthetic peptide: human PARP1

Antigen Species: Human

Gene ID: 142

Uniprot ID: P09874

Synonyms: ADPRT 1;ARTD1;ADPRT;PARP;PARP-1;Poly-PARP;PARS;ADPRT1;pADPRT-1;PPOL

Biology Area: ADP-ribosylation,Base Excision Repair,DNA Damage Recognition

Research Background

This gene encodes a chromatin-associated enzyme, poly(ADP-ribosyl)transferase, which modifies various nuclear proteins by poly(ADP-ribosyl)ation. The modification is dependent on DNA and is involved in the regulation of various important cellular processes such as differentiation, proliferation, and tumor transformation and also in the regulation of the molecular events involved in the recovery of cell from DNA damage. In addition, this enzyme may be the site of mutation in Fanconi anemia, and may participate in the pathophysiology of type I diabetes. [provided by RefSeq, Jul 2008].

Inhibitor · Natural Compounds · Compound Libraries · Recombinant Proteins

This product is for Research Use Only · Not for Human or Veterinary or Therapeutic Use

Tel:781-999-4286 E_mail:info@targetmol.com Address:34 Washington Street,Wellesley Hills,MA 02481