

Anti-Pan Cytokeratin Polyclonal Antibody

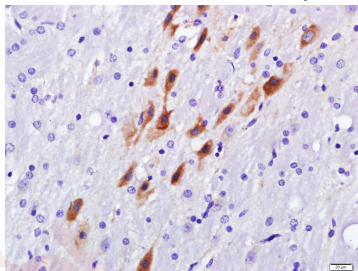
Product Details

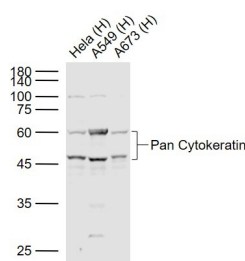
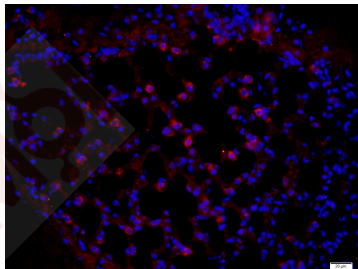
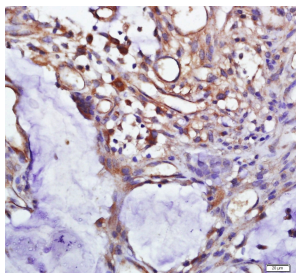
Ig Type:	IgG
Reactivity:	Human,Mouse,Rat,Cow (predicted:Chicken,Dog,Pig,Horse,Rabbit)
Purification:	Protein A purified

Applications

1. Tissue/cell: Rat brain tissue; 4% Paraformaldehyde-fixed and paraffin-embedded; Antigen retrieval: citrate buffer (0.01M, pH6.0), Boiling bathing for 15 min; Block endogenous peroxidase by 3% Hydrogen peroxide for 30 min; Blocking buffer (normal goat serum) at 37°C for 20 min;
Incubation: Anti-Pan Cytokeratin Polyclonal Antibody, Unconjugated (TMAB-01329) 1:500, overnight at 4°C, followed by conjugation to the secondary antibody and DAb staining.
2. Tissue/cell: Human colon cancer; 4% Paraformaldehyde-fixed and paraffin-embedded; Antigen retrieval: citrate buffer (0.01M, pH6.0), Boiling bathing for 15 min; Block endogenous peroxidase by 3% Hydrogen peroxide for 30 min; Blocking buffer (normal goat serum) at 37°C for 20 min;
Incubation: Anti-Pan Cytokeratin Polyclonal Antibody, Unconjugated (TMAB-01329) 1:500, overnight at 4°C, followed by conjugation to the secondary antibody and DAb staining.
3. Paraformaldehyde-fixed, paraffin embedded (mouse lung); Antigen retrieval by boiling in sodium citrate buffer (pH6) for 15 min; Block endogenous peroxidase by 3% hydrogen peroxide for 20 min; Blocking buffer (normal goat serum) at 37°C for 30 min; Antibody incubation with (Pan Cytokeratin) Polyclonal Antibody, Unconjugated (TMAB-01329) at 1:400 overnight at 4°C, followed by a conjugated secondary (Goat Anti-rabbit IgG/Bio) for 20 minutes at 37°C, followed by a conjugated streptavidin at[1:500] for 40 minutes and DAPI staining of the nucleus.
4. Sample:
Lane 1: Hela (Human) Cell Lysate at 30 µg
Lane 2: A549 (Human) Cell Lysate at 30 µg
Lane 3: A673 (Human) Cell Lysate at 30 µg
Primary: Anti-Pan Cytokeratin (TMAB-01329) at 1/1000 dilution
Secondary: IRDye800CW Goat Anti-Rabbit IgG at 1/20000 dilution
Predicted band size: 42-64 kDa
Observed band size: 46,60 kDa

Verified Activity:





Application: FCM, ICC/IF, IF, IHC-Fr, IHC-P, WB

Recommended WB: 1:500-2000; IHC-P: 1:100-2000; IHC-Fr: 1:100-500; ICC/IF: 1:100; IF: 1:100-500; FCM: 1µg /test

Properties

Stability & Storage: Store at -20°C or -80°C for 12 months. Avoid repeated freeze-thaw cycles.

Shipping: Shipping with blue ice.

Antigen Details

Immunogen: KLH conjugated synthetic peptide: human cytokeratin 16

Antigen Species: Human

Gene ID: 192666

Uniprot ID: Q2M2I5

Synonyms: [cytokeratins 13, 14, 16, 17, 19, 24]; wide spectrum Cytokeratin; pan-CK; P-CK; CK-PAN; pan-cytokeratin; Cytokeratins

Biology Area: Cytokeratins

Research Background

Cytokeratins are proteins of keratin-containing intermediate filaments found in the intracytoplasmic cytoskeleton of epithelial tissue. The cytokeratins are encoded by a family encompassing 30 genes. Among them, 20 are epithelial genes and the remaining 10 are specific for trichocytes. In the cytoplasm, the keratin filaments conform a complex network which extends from the surface of the nucleus to the cell membrane. Numerous accessory proteins are involved in the genesis and maintenance of such structure. This association between the plasma membrane and the nuclear surface provides important implications for the organization of the cytoplasm and cellular communication mechanisms. Apart from the relatively static functions provided in terms of supporting the nucleus and providing

tensile strength to the cell, the cytokeratin networks undergo rapid phosphate exchanges mediated depolymerization, with important implications in the more dynamic cellular processes such as mitosis and post-mitotic period, cell movement and differentiation. Cytokeratins interact with desmosomes and hemidesmosomes, thus collaborating to cell-cell adhesion and basal cell-underlying connective tissue connection.

Inhibitor · Natural Compounds · Compound Libraries · Recombinant Proteins

This product is for Research Use Only · Not for Human or Veterinary or Therapeutic Use

Tel:781-999-4286 E_mail:info@targetmol.com Address:34 Washington Street,Wellesley Hills,MA 02481