

## Anti-P2RX4 Polyclonal Antibody

## Product Details

Ig Type:	IgG
Reactivity:	Human (predicted:Mouse,Rat)
Molecular Weight:	Theoretical: 43 kDa. Actual: 60 kDa.
Purification:	Protein A purified

## Applications

## Sample:

Large intestine (Mouse) Lysate at 40 µg

Placenta (Mouse) Lysate at 40 µg

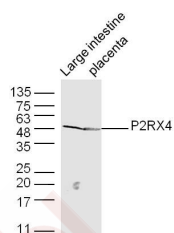
## Verified Activity:

Primary: Anti-P2RX4 (TMAB-01313) at 1/300 dilution

Secondary: IRDye800CW Goat Anti-Rabbit IgG at 1/20000 dilution

Predicted band size: 43 kDa

Observed band size: 48 kDa



Application: ELISA, ICC/IF, IHC-Fr, IHC-P, WB

Recommended WB: 1:500-2000; IHC-P: 1:100-500; IHC-Fr: 1:100-500; ICC/IF: 1:100-500; IF: 1:100-500; ELISA: 1:5000-10000

## Properties

Stability &amp; Storage: Store at -20°C or -80°C for 12 months. Avoid repeated freeze-thaw cycles.

Shipping: Shipping with blue ice.

## Antigen Details

Immunogen: KLH conjugated synthetic peptide: human P2RX4

Antigen Species: Human

Gene ID: 5025

Uniprot ID: Q99571

Synonyms: P2RX4; Purinergic receptor; ATP receptor; Purinoceptor P2X4; ATP gated cation channel protein; Purinergic receptor P2X ligand gated ion channel 4; P2X4R; P2X purinoceptor 4; P2X receptor subunit 4; Purinergic receptor P2X4; P2X4

## Research Background

The P2X receptor family is comprised of ligand-gated ion channels that allow for the increased permeability of

calcium into the cell in response to extracellular ATP. The seven P2X receptors, P2X1-P2X7, form either homomeric or heteromeric channels or both. They are characterized by intracellular amino- and carboxy-termini. P2X receptors are expressed in a wide variety of tissues, including neurons, prostate, bladder, pancreas, colon, testis and ovary. The major function of the P2X receptors is to mediate synaptic transmissions between neurons and to other tissues via the binding of extracellular ATP, which acts as a neurotransmitter. The P2X receptors may be involved in the onset of necrosis or apoptosis after prolonged exposure to high concentrations of extracellular ATP.

**Inhibitor · Natural Compounds · Compound Libraries · Recombinant Proteins**

This product is for Research Use Only· Not for Human or Veterinary or Therapeutic Use

Tel:781-999-4286 E\_mail:info@targetmol.com Address:34 Washington Street,Wellesley Hills,MA 02481