

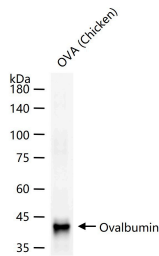
## Anti-Ovalbumin Polyclonal Antibody

### Product Details

Ig Type:	IgG
Reactivity:	Chicken
Molecular Weight:	Theoretical: 43 kDa. Actual: 43 kDa.
Purification:	Protein A purified

### Applications

Verified Activity: 25 µg total protein per Lane of various lysates probed with Ovalbumin polyclonal antibody, unconjugated (TMAB-01303) at 1:10000 dilution and 4°C overnight incubation. Followed by conjugated secondary antibody incubation at RT for 60 min.



Application:	WB
Recommended	WB: 1:5000-20000

### Properties

Stability & Storage:	Store at -20°C or -80°C for 12 months. Avoid repeated freeze-thaw cycles.
Shipping:	Shipping with blue ice.

### Antigen Details

Immunogen:	Ovalbumin [hen egg white]
Antigen Species:	Chicken
Gene ID:	396058
Uniprot ID:	P01012
Synonyms:	Serpin B8;Protease inhibitor 8;Hen egg white;PI8;Cytoplasmic antiproteinase 2;serpin peptidase inhibitor clade B member 8;CAP 2;SERPINB14;SERPINB8;Ovalbumin;Egg albumin; CAP2;Plakalbumin;Gal d II;Allergen Gal d 2
Biology Area:	Endoderm,Other Chaperones,Lipid metabolism,Metabolic disorders,Signal transduction proteins ELISA kits,Endoderm,Serum Proteins

**Inhibitor · Natural Compounds · Compound Libraries · Recombinant Proteins**

This product is for Research Use Only. Not for Human or Veterinary or Therapeutic Use

Tel:781-999-4286 E\_mail:info@targetmol.com Address:34 Washington Street,Wellesley Hills,MA 02481