

Anti-OTUD1 Polyclonal Antibody

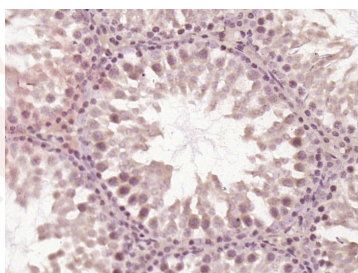
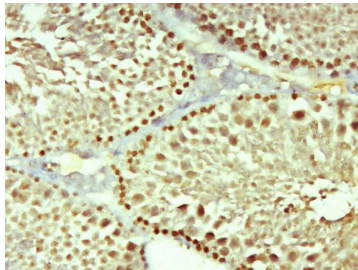
Product Details

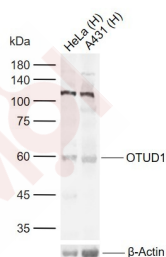
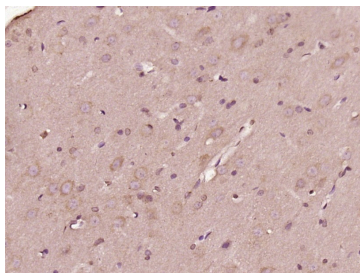
Ig Type:	IgG
Reactivity:	Human,Mouse,Rat (predicted:Cow)
Molecular Weight:	Theoretical: 51 kDa. Actual: 60 kDa.
Purification:	Protein A purified

Applications

Verified Activity:

1. Paraformaldehyde-fixed, paraffin embedded (Mouse testis); Antigen retrieval by boiling in sodium citrate buffer (pH6.0) for 15 min; Block endogenous peroxidase by 3% hydrogen peroxide for 20 min; Blocking buffer (normal goat serum) at 37°C for 30 min; Antibody incubation with (OTUD1) Polyclonal Antibody, Unconjugated (TMAB-01302) at 1:500 overnight at 4°C, followed by a conjugated secondary for 20 min and DAB staining.
2. Paraformaldehyde-fixed, paraffin embedded (rat testis tissue); Antigen retrieval by boiling in sodium citrate buffer (pH6.0) for 15 min; Block endogenous peroxidase by 3% hydrogen peroxide for 20 min; Blocking buffer (normal goat serum) at 37°C for 30 min; Antibody incubation with (OTUD1) Polyclonal Antibody, Unconjugated (TMAB-01302) at 1:400 overnight at 4°C, followed by operating according to SP Kit (Rabbit) instructions and DAB staining.
3. Paraformaldehyde-fixed, paraffin embedded (Rat brain); Antigen retrieval by boiling in sodium citrate buffer (pH6.0) for 15 min; Block endogenous peroxidase by 3% hydrogen peroxide for 20 min; Blocking buffer (normal goat serum) at 37°C for 30 min; Antibody incubation with (OTUD1) Polyclonal Antibody, Unconjugated (TMAB-01302) at 1:400 overnight at 4°C, followed by operating according to SP Kit (Rabbit) instructions and DAB staining.
4. Sample:
Lane 1: Human HeLa cell lysates
Lane 2: Human A431 cell lysates
Primary: Anti-OTUD1 (TMAB-01302) at 1/1000 dilution
Secondary: IRDye800CW Goat Anti-Rabbit IgG at 1/20000 dilution
Predicted band size: 51 kDa
Observed band size: 60 kDa





Application: IF,IHC-Fr,IHC-P,WB

Recommended WB: 1:500-2000; IHC-P: 1:100-500; IHC-Fr: 1:100-500; IF: 1:100-500

Properties

Stability & Storage: Store at -20°C or -80°C for 12 months. Avoid repeated freeze-thaw cycles.

Shipping: Shipping with blue ice.

Antigen Details

Immunogen: KLH conjugated synthetic peptide: human OTUD1

Antigen Species: Human

Gene ID: 220213

Uniprot ID: Q5VV17

Synonyms: OTDC1;OTU domain containing 1;DUBA-7;DUBA7;OTU domain-containing protein 1

Biology Area: Deubiquitination,Deubiquitination

Research Background

Deubiquitinating enzymes (DUBs; see MIM 603478) are proteases that specifically cleave ubiquitin (MIM 191339) linkages, negating the action of ubiquitin ligases. DUBA7 belongs to a DUB subfamily characterized by an ovarian tumor (OTU) domain.[supplied by OMIM, May 2008]

Inhibitor · Natural Compounds · Compound Libraries · Recombinant Proteins

This product is for Research Use Only· Not for Human or Veterinary or Therapeutic Use

Tel:781-999-4286 E_mail:info@targetmol.com Address:34 Washington Street,Wellesley Hills,MA 02481