

## Anti-Osteopontin Polyclonal Antibody 2

### Product Details

Ig Type:	IgG
Reactivity:	Human,Rat
Molecular Weight:	Theoretical: 34 kDa. Actual: 60 kDa.
Purification:	Protein A purified

### Applications

1. Tissue/cell: rat shin bone; 4% Paraformaldehyde-fixed and paraffin-embedded; Antigen retrieval: citrate buffer (0.01M, pH6.0), Boiling bathing for 15 min; Block endogenous peroxidase by 3% Hydrogen peroxide for 30 min; Blocking buffer (normal goat serum) at 37°C for 20 min; Incubation: Anti-osteopontin Polyclonal Antibody, Unconjugated (TMAB-01298) 1:300, overnight at 4°C, followed by conjugation to the secondary antibody and DAB staining.

#### 2. Sample:

Lane 1: HepG2 (Human) Cell Lysate at 30 µg

Lane 2: A549 (Human) Cell Lysate at 30 µg

Lane 3: U251 (Human) Cell Lysate at 30 µg

Primary: Anti-Osteopontin (TMAB-01298) at 1/1000 dilution

Secondary: IRDye800CW Goat Anti-Rabbit IgG at 1/20000 dilution

Predicted band size: 34 kDa

Observed band size: 60 kDa

#### Verified Activity:

3. Paraformaldehyde-fixed, paraffin embedded (Rat lung); Antigen retrieval by boiling in sodium citrate buffer (pH6.0) for 15 min; Block endogenous peroxidase by 3% hydrogen peroxide for 20 min; Blocking buffer (normal goat serum) at 37°C for 30 min; Antibody incubation with (Osteopontin) Polyclonal Antibody, Unconjugated (TMAB-01298) at 1:400 overnight at 4°C, followed by a conjugated secondary for 20 min and DAB staining.

4. Blank control: HepG2. Primary Antibody (green line): Rabbit Anti-Osteopontin antibody (TMAB-01298)

Dilution: 1 µg/10<sup>6</sup> cells;

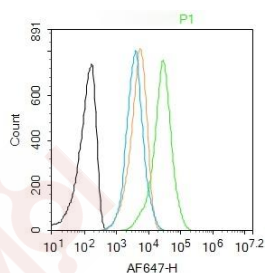
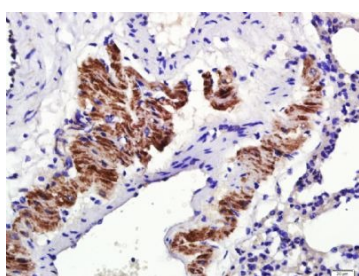
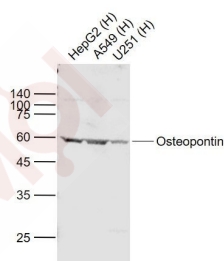
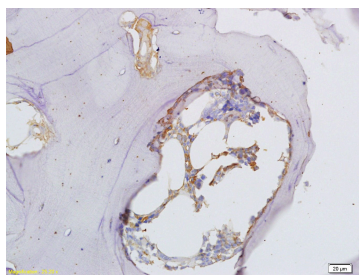
Isotype Control Antibody (orange line): Rabbit IgG.

Secondary Antibody: Goat anti-rabbit IgG-AF647

Dilution: 1 µg/test.

#### Protocol

The cells were fixed with 4% PFA (10 min at room temperature) and then permeabilized with 0.1% PBST for 20 min at room temperature. The cells were then incubated in 5% BSA to block non-specific protein-protein interactions for 30 min at room temperature. Cells stained with Primary Antibody for 30 min at room temperature. The secondary antibody used for 40 min at room temperature.



Application: FCM,IF,IHC-Fr,IHC-P,WB

Recommended WB: 1:500-2000; IHC-P: 1:500-2000; IHC-Fr: 1:100-500; IF: 1:100-500; FCM: 1ug/Test

### Properties

Stability & Storage: Store at  $-20^{\circ}\text{C}$  or  $-80^{\circ}\text{C}$  for 12 months. Avoid repeated freeze-thaw cycles.

Shipping: Shipping with blue ice.

### Antigen Details

Immunogen: KLH conjugated synthetic peptide: human OPN

Antigen Species: Human

Gene ID: 6696

Uniprot ID: P10451

Synonyms: BNSP;BSPI;ETA-1;OPN;secreted phosphoprotein 1

### Research Background

Osteopontin is the principal phosphorylated glycoprotein of bone and is expressed in a limited number of other tissues including dentine.

## A DRUG SCREENING EXPERT

---

Osteopontin is produced by osteoblasts under stimulation by calcitriol and binds tightly to hydroxyapatite. It is also involved in the anchoring of osteoclasts to the mineral of bone matrix via the vitronectin receptor, which has specificity for osteopontin. Osteopontin is overexpressed in a variety of cancers, including lung, breast, colorectal, stomach, ovarian, melanoma and mesothelioma.

**Inhibitor · Natural Compounds · Compound Libraries · Recombinant Proteins**

This product is for Research Use Only · Not for Human or Veterinary or Therapeutic Use

Tel:781-999-4286 E\_mail:info@targetmol.com Address:34 Washington Street,Wellesley Hills,MA 02481