

Anti-Osteopontin Polyclonal Antibody

Product Details

Ig Type:	IgG
Reactivity:	Human,Rat
Molecular Weight:	Theoretical: 34 kDa.
Purification:	Protein A purified

Applications

1. Sample: A549 Cell Lysate at 40 µg
 Primary: Anti-osteopontin (TMAB-01297) at 1/300 dilution
 Secondary: IRDye800CW Goat Anti-Rabbit IgG at 1/20000 dilution
 Predicted band size: 35 kDa
 Observed band size: 50 kDa

2. Sample:

Lane 1: HepG2 (Human) Cell Lysate at 30 µg
 Lane 2: A549 (Human) Cell Lysate at 30 µg
 Lane 3: U251 (Human) Cell Lysate at 30 µg
 Primary: Anti-Osteopontin at 1/1000 dilution
 Secondary: IRDye800CW Goat Anti-Rabbit IgG at 1/20000 dilution
 Predicted band size: 60-65 kDa
 Observed band size: 60 kDa

Verified Activity:

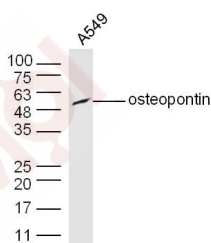
3. Paraformaldehyde-fixed, paraffin embedded Rat lung; Antigen retrieval by boiling in sodium citrate buffer (pH6.0) for 15 min; Antibody incubation with Osteopontin Polyclonal Antibody, Unconjugated (TMAB-01297) at 1:400 overnight at 4°C, followed by conjugation to the SP Kit (Rabbit) and DAB staining.

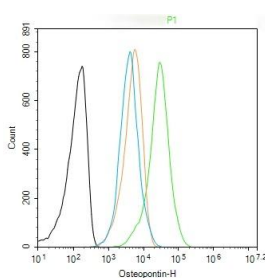
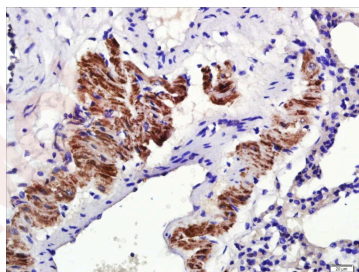
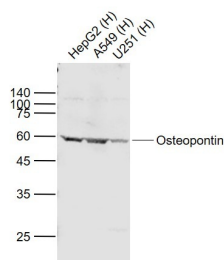
4. Blank control: HepG2. Primary Antibody (green line): Rabbit Anti-Osteopontin antibody (TMAB-01297)

Dilution: 1 µg/10⁶ cells;
 Isotype Control Antibody (orange line): Rabbit IgG.
 Secondary Antibody: Goat anti-rabbit IgG-AF647
 Dilution: 1 µg/test.

Protocol

The cells were fixed with 4% PFA (10 min at room temperature) and then permeabilized with 0.1% PBST for 20 min at room temperature. The cells were then incubated in 5% BSA to block non-specific protein-protein interactions for 30 min at room temperature. Cells stained with Primary Antibody for 30 min at room temperature. The secondary antibody used for 40 min at room temperature.





Application: FCM,IF,IHC-Fr,IHC-P,WB

Recommended WB: 1:500-2000; IHC-P: 1:500-2000; IHC-Fr: 1:100-500; IF: 1:100-500; FCM: 1ug/Test

Properties

Stability & Storage: Store at -20°C or -80°C for 12 months. Avoid repeated freeze-thaw cycles.

Shipping: Shipping with blue ice.

Antigen Details

Immunogen: KLH conjugated synthetic peptide: human OPN

Antigen Species: Human

Gene ID: 6696

Uniprot ID: P10451

Synonyms: BSPI;ETA-1;secreted phosphoprotein 1;OPN;BNSP

Research Background

Osteopontin is the principal phosphorylated glycoprotein of bone and is expressed in a limited number of other tissues including dentine.

Osteopontin is produced by osteoblasts under stimulation by calcitriol and binds tightly to hydroxyapatite. It is also involved in the anchoring of osteoclasts to the mineral of bone matrix via the vitronectin receptor, which has specificity for osteopontin. Osteopontin is overexpressed in a variety of cancers, including lung, breast, colorectal, stomach, ovarian, melanoma and mesothelioma.

Inhibitor · Natural Compounds · Compound Libraries · Recombinant Proteins

This product is for Research Use Only · Not for Human or Veterinary or Therapeutic Use

Tel:781-999-4286 E_mail:info@targetmol.com Address:34 Washington Street,Wellesley Hills,MA 02481