

Anti-Osteocalcin Polyclonal Antibody 2

Product Details

Ig Type: IgG
Reactivity: Human, Mouse, Rat
Molecular Weight: Theoretical: 11 kDa. Actual: 11 kDa.
Purification: Protein A purified

Applications

1. Sample:

Lane 1: Mouse NIH/3T3 cell lysates

Lane 2: Human MG63 cell lysates

Lane 3: Human A549 cell lysates

Lane 4: Human U-2 OS cell lysates

Primary: Anti-Osteocalcin (TMAB-01296) at 1/500 dilution

Secondary: IRDye800CW Goat Anti-Rabbit IgG at 1/20000 dilution

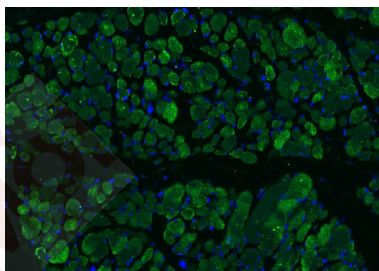
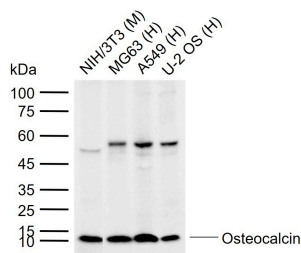
Predicted band size: 11 kDa

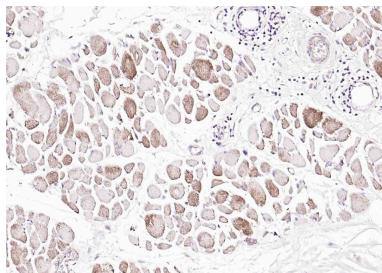
Observed band size: 11 kDa

Verified Activity:

2. Paraformaldehyde-fixed, paraffin embedded (human skeletal muscle); Antigen retrieval by boiling in sodium citrate buffer (pH6.0) for 15 min; Blocking buffer (normal goat serum) at 37°C for 30 min; Incubation with (Osteocalcin) Polyclonal Antibody, Unconjugated (TMAB-01296) at 1:100 overnight at 4°C, followed by a conjugated Goat Anti-Rabbit IgG antibody for 90 minutes, and DAPI for nucleus staining.

3. Paraformaldehyde-fixed, paraffin embedded (human skeletal muscle); Antigen retrieval by boiling in sodium citrate buffer (pH6.0) for 15 min; Block endogenous peroxidase by 3% hydrogen peroxide for 20 min; Blocking buffer (normal goat serum) at 37°C for 30 min; Incubation with (Osteocalcin) Polyclonal Antibody, Unconjugated (TMAB-01296) at 1:100 overnight at 4°C, followed by operating according to SP Kit (Rabbit) instructions and DAB staining.





Application: ELISA,IF,IHC-Fr,IHC-P,WB

Recommended WB: 1:500-2000; IHC-P: 1:100-500; IHC-Fr: 1:100-500; IF: 1:100-500; ELISA: 1:5000-10000

Properties

Stability & Storage: Store at -20°C or -80°C for 12 months. Avoid repeated freeze-thaw cycles.

Shipping: Shipping with blue ice.

Antigen Details

Immunogen: KLH conjugated synthetic peptide: human Osteocalcin

Antigen Species: Human

Gene ID: 632

Uniprot ID: P02818

Synonyms: Bone Gla protein (BGP);BGLAP;Gamma-carboxyglutamic acid-containing protein;Osteocalcin

Biology Area: Bone,Osteogenesis

Research Background

Osteocalcin belongs to the osteocalcin/matrix Gla protein family and constitutes 1 to 2% of the total bone protein. It is a 49 amino acid single chain vitamin K dependent protein, made by osteoblasts, and is a major component of the noncollagenous bone matrix. Post translational modification by a vitamin K dependent carboxylase produces three gamma carboxyglutamic acid residues at positions 17, 21 and 24, giving it a high affinity for calcium. It also binds strongly to apatite.

Inhibitor · Natural Compounds · Compound Libraries · Recombinant Proteins

This product is for Research Use Only· Not for Human or Veterinary or Therapeutic Use

Tel:781-999-4286 E_mail:info@targetmol.com Address:34 Washington Street,Wellesley Hills,MA 02481