

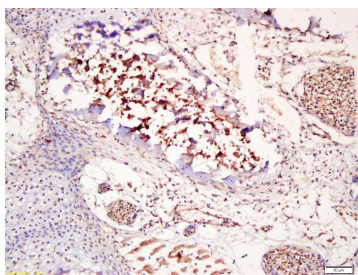
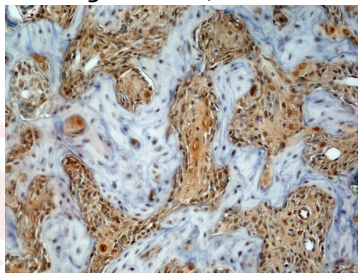
Anti-Osteocalcin Polyclonal Antibody

Product Details

Ig Type:	IgG
Reactivity:	Mouse (predicted:Human,Rat,Dog,Cow,Horse)
Molecular Weight:	Theoretical: 11 kDa.
Purification:	Protein A purified

Applications

- Verified Activity:
1. Generously provided by Markus Linder from Medical University Vienna as part of the Bioss Discovery Program. Formalin-fixed, paraffin embedded, and decalcified in EDTA mouse osteosarcoma labeled with Anti-Osteocalcin Polyclonal Antibody, Unconjugated (TMAB-01295) at 1:100 followed by conjugation to the secondary antibody and DAb staining.
 2. Tissue/cell: bone of mouse embryo; 4% Paraformaldehyde-fixed and paraffin-embedded; Antigen retrieval: citrate buffer (0.01M, pH6.0), Boiling bathing for 15 min; Block endogenous peroxidase by 3% Hydrogen peroxide for 30 min; Blocking buffer (normal goat serum) at 37°C for 20 min; Incubation: Anti-Osteocalcin Polyclonal Antibody, Unconjugated (TMAB-01295) 1:200, overnight at 4°C, followed by conjugation to the secondary antibody and DAb staining.



Application:	IF,IHC-Fr,IHC-P
Recommended	IHC-P: 1:100-500; IHC-Fr: 1:100-500; IF: 1:100-500

Properties

Stability & Storage:	Store at -20°C or -80°C for 12 months. Avoid repeated freeze-thaw cycles.
Shipping:	Shipping with blue ice.

Antigen Details

Immunogen: KLH conjugated synthetic peptide: human BGP
Antigen Species: Human
Gene ID: 632
Uniprot ID: P02818
Synonyms: Osteocalcin;Gamma-carboxyglutamic acid-containing protein;Bone Gla protein (BGP);BGLAP
Biology Area: Bone,Osteogenesis

Research Background

Osteocalcin belongs to the osteocalcin/matrix Gla protein family and constitutes 1 to 2% of the total bone protein. It is a 49 amino acid single chain vitamin K dependent protein, made by osteoblasts, and is a major component of the noncollagenous bone matrix. Post translational modification by a vitamin K dependent carboxylase produces three gamma carboxyglutamic acid residues at positions 17, 21 and 24, giving it a high affinity for calcium. It also binds strongly to apatite.

Inhibitor · Natural Compounds · Compound Libraries · Recombinant Proteins

This product is for Research Use Only · Not for Human or Veterinary or Therapeutic Use

Tel:781-999-4286 E_mail:info@targetmol.com Address:34 Washington Street,Wellesley Hills,MA 02481