

Anti-Osteoactivin/GPNMB Polyclonal Antibody

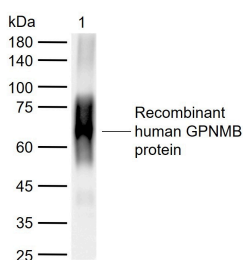
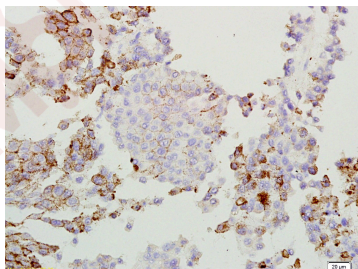
Product Details

Ig Type:	IgG
Reactivity:	Human,Rat (predicted:Pig,Cow,Horse,GuineaPig)
Molecular Weight:	Theoretical: 61 kDa. Actual: 65 kDa.
Purification:	Protein A purified

Applications

1. Tissue/cell: rat lung tissue (melanoma); 4% Paraformaldehyde-fixed and paraffin-embedded;
Antigen retrieval: citrate buffer (0.01M, pH6.0), Boiling bathing for 15 min; Block endogenous peroxidase by 3% Hydrogen peroxide for 30 min; Blocking buffer (normal goat serum) at 37°C for 20 min;
Incubation: Anti-GPNMB/Osteoactivin Polyclonal Antibody, Unconjugated (TMAB-01294) 1:200, overnight at 4°C, followed by conjugation to the secondary antibody and DAb staining.
2. Sample:
Lane 1: Recombinant human GPNMB protein, C-His (HEK293)
Primary: Anti-GPNMB (TMAB-01294) at 1/1000 dilution
Secondary: IRDye800CW Goat Anti-Rabbit IgG at 1/20000 dilution
Predicted band size: 61 kDa
Observed band size: 65 kDa

Verified Activity:



Application:	IF,IHC-Fr,IHC-P,WB
Recommended	WB: 1:500-2000; IHC-P: 1:100-500; IHC-Fr: 1:100-500; IF: 1:100-500

Properties

Stability & Storage: Store at -20°C or -80°C for 12 months. Avoid repeated freeze-thaw cycles.

Shipping: Shipping with blue ice.

Antigen Details

Immunogen: KLH conjugated synthetic peptide: human GPNMB

Antigen Species: Human

Gene ID: 10457

Uniprot ID: Q14956

Synonyms: HGFIN;glycoprotein (transmembrane) nmb;Osteoactivin;NMB

Biology Area: Tumor-associated antigens,Macrophage / Inflamm.

Research Background

The protein encoded by this gene is a type I transmembrane glycoprotein which shows homology to the pMEL17 precursor, a melanocyte-specific protein. GPNMB shows expression in the lowly metastatic human melanoma cell lines and xenografts but does not show expression in the highly metastatic cell lines. GPNMB may be involved in growth delay and reduction of metastatic potential. Two transcript variants encoding different isoforms have been found for this gene. [provided by RefSeq, Jul 2008]

Inhibitor · Natural Compounds · Compound Libraries · Recombinant Proteins

This product is for Research Use Only · Not for Human or Veterinary or Therapeutic Use

Tel:781-999-4286 E_mail:info@targetmol.com Address:34 Washington Street,Wellesley Hills,MA 02481