

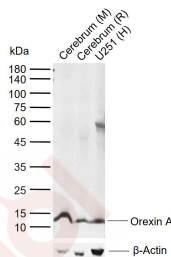
Anti-Orexin A Polyclonal Antibody

Product Details

Ig Type: IgG
Reactivity: Human,Mouse,Rat
Molecular Weight: Theoretical: 13 kDa. Actual: 12 kDa.
Purification: Protein A purified

Applications

Sample:
Lane 1: Mouse Cerebrum tissue lysates
Lane 2: Rat Cerebrum tissue lysates
Lane 3: Human U251 cell lysates
Verified Activity:
Primary: Anti-Orexin A (TMAB-01290) at 1/1000 dilution
Secondary: IRDye800CW Goat Anti-Rabbit IgG at 1/20000 dilution
Predicted band size: 13 kDa
Observed band size: 12 kDa



Application: ELISA,WB
Recommended WB: 1:500-2000; ELISA: 1:5000-10000

Properties

Stability & Storage: Store at -20°C or -80°C for 12 months. Avoid repeated freeze-thaw cycles.
Shipping: Shipping with blue ice.

Antigen Details

Immunogen: KLH conjugated synthetic peptide: human Orexin A
Antigen Species: Human
Gene ID: 3060
Uniprot ID: O43612
Synonyms: Hypocretin1;ORX-A;PREPROOREXIN;Orexin A;PPOX;Hypocretin(orexin) neuropeptide precursor; PPORX;orexin-A;Hypocretin 1;OX;HCRT 1;HCRT;HCRT1;Hypocretin;Orexin;OREX;OrexinA; Hypocretin A;Hypocretin neuropeptide precursor;Orexin precursor
Biology Area: Obesity, Metabolism, Hormones

Research Background

Prepro-orexin is 130 amino acid long peptide with a putative 33 AA secretory sequence, a hydrophobic core followed by residues with small polar side chains. The expression was detected in brain and to a small extent in testis. These neuropeptides bind and activate two closely related Orexin receptors—G-protein coupled receptors (GPCRs) OX1R and OX2R. Orexins (Orexin A and Orexin B) are a family of hypothalamic neuropeptides selectively expressed in the hypothalamus. Orexin A and Orexin B are derived from the same precursor (Prepro-orexin) by proteolytic cleavage.

Inhibitor · Natural Compounds · Compound Libraries · Recombinant Proteins

This product is for Research Use Only · Not for Human or Veterinary or Therapeutic Use

Tel:781-999-4286 E_mail:info@targetmol.com Address:34 Washington Street,Wellesley Hills,MA 02481