

Anti-OPA1 Polyclonal Antibody

Product Details

Ig Type:	IgG
Reactivity:	Rat (predicted:Human,Mouse,Dog,Pig,Cow,Horse,Rabbit,Sheep)
Molecular Weight:	Theoretical: 111 kDa. Actual: 111 kDa.
Purification:	Protein A purified

Applications

1. Tissue/cell: rat brain tissue; 4% Paraformaldehyde-fixed and paraffin-embedded; Antigen retrieval: citrate buffer (0.01M, pH6.0), Boiling bathing for 15 min; Block endogenous peroxidase by 3% Hydrogen peroxide for 30 min; Blocking buffer (normal goat serum) at 37°C for 20 min; Incubation: Anti-OPA1 Polyclonal Antibody, Unconjugated (TMAB-01288) 1:200, overnight at 4°C, followed by conjugation to the secondary antibody and DAb staining.

Verified Activity:

2. Sample:

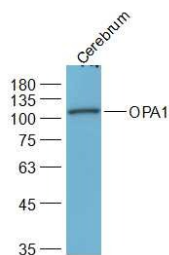
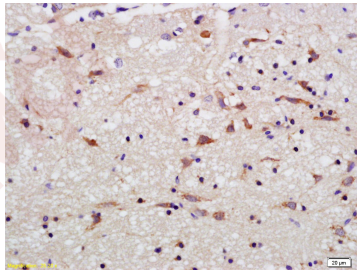
Cerebrum (Rat) Lysate at 40 µg

Primary: Anti-OPA1 (TMAB-01288) at 1/2000 dilution

Secondary: IRDye800CW Goat Anti-Rabbit IgG at 1/20000 dilution

Predicted band size: 111 kDa

Observed band size: 111 kDa



Application: IF,IHC-Fr,IHC-P,WB

Recommended WB: 1:500-2000; IHC-P: 1:100-500; IHC-Fr: 1:100-500; IF: 1:100-500

Properties

Stability & Storage: Store at -20°C or -80°C for 12 months. Avoid repeated freeze-thaw cycles.

Shipping: Shipping with blue ice.

Antigen Details

Immunogen: KLH conjugated synthetic peptide: human OPA1

Antigen Species: Human

Gene ID: 4976

Uniprot ID: O60313

Synonyms: Large GTP binding protein;OPA 1;Juvenile kjer type optic atrophy;OAK;Optic atrophy protein 1 homolog;Dynamin like 120 kDa protein;Mitochondrial dynamin like 120 kDa protein;Optic atrophy 1 gene protein;MGM1;Dynamin like 120 kDa protein, mitochondrial;Optic atrophy protein 1;largeG;Optic atrophy 1 homolog(human);NPG;OPTIC ATROPHY 1;OPA1;KIAA0567;KJER type;Optic atrophy 1 (autosomal dominant);NTG;FLJ12460;Mitochondrial dynamin like GTPase;Dynamin-like 120 kDa protein, form S1

Biology Area: Cardiac metabolism,Mitophagy fission and fusion,Neurodegenerative disease,Visual system

Research Background

OPA1 is a 120kDa protein belonging to the dynamin family. The OPA1 gene has been localized to 3q29. The gene is targeted to mitochondria and is involved in mitochondrial biogenesis. Defects in OPA1 are a cause of optic atrophy type 1. OPA1 is mostly expressed in retina but can also be expressed in brain, testis, heart and skeletal muscle.

Inhibitor · Natural Compounds · Compound Libraries · Recombinant Proteins

This product is for Research Use Only · Not for Human or Veterinary or Therapeutic Use

Tel:781-999-4286 E_mail:info@targetmol.com Address:34 Washington Street,Wellesley Hills,MA 02481