

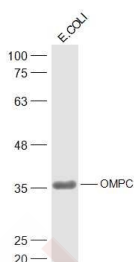
Anti-OmpC Polyclonal Antibody

Product Details

Ig Type:	IgG
Reactivity:	Escherichia Coli
Molecular Weight:	Theoretical: 38 kDa. Actual: 38 kDa.
Purification:	Protein A purified

Applications

Sample:	E.coli Lysis solution Lysate at 30 µg
Verified Activity:	Primary: Anti-OMPC (TMAB-01287) at 1/500 dilution Secondary: IRDye800CW Goat Anti-Rabbit IgG at 1/20000 dilution Predicted band size: 38 kDa Observed band size: 38 kDa



Application:	WB
Recommended	WB: 1:500-2000

Properties

Stability & Storage:	Store at -20°C or -80°C for 12 months. Avoid repeated freeze-thaw cycles.
Shipping:	Shipping with blue ice.

Antigen Details

Immunogen:	KLH conjugated synthetic peptide: E.coli OMPC
Synonyms:	par;ompC;Outer membrane protein 1B;Outer membrane porin C;meoA;Outer membrane protein C;Porin OmpC

Research Background

OMPC protein plays an important role in bacterial division, forming a circular structure at the division site to control the bacterial division process.

Inhibitor · Natural Compounds · Compound Libraries · Recombinant Proteins

This product is for Research Use Only. Not for Human or Veterinary or Therapeutic Use

Tel:781-999-4286 E_mail:info@targetmol.com Address:34 Washington Street,Wellesley Hills,MA 02481