

Anti-OCN Polyclonal Antibody 2

Product Details

Ig Type:	IgG
Reactivity:	Human (predicted:Mouse,Rat,Dog,Pig,Cow,Horse,GuineaPig)
Molecular Weight:	Theoretical: 57 kDa.
Purification:	Protein A purified

Applications

1. The blue histogram is unstained cells (293FT cells).
The Wathet Blue histogram is cells stained with secondary antibody alone.
The Orange histogram is cells stained with rabbit IgG isotype control antibody plus secondary antibody.
The green histogram is cells stained with Rabbit Anti-OCN antibody (TMAB-01281) plus secondary antibody (Concentraion 1: 20).

2. Sample:

Lane 1: A549 (Human) Cell Lysate at 30 μ g
Lane 2: MCF-7 (Human) Cell Lysate at 30 μ g
Lane 3: A431 (Human) Cell Lysate at 30 μ g
Lane 4: HepG2 (Human) Cell Lysate at 30 μ g
Lane 5: Hela (Human) Cell Lysate at 30 μ g

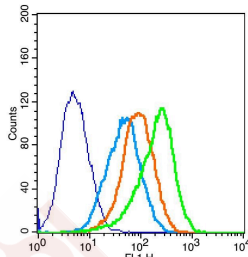
Verified Activity: Primary: Anti-OCN (TMAB-01281) at 1/1000 dilution
Secondary: IRDye800CW Goat Anti-Rabbit IgG at 1/20000 dilution
Predicted band size: 57 kDa

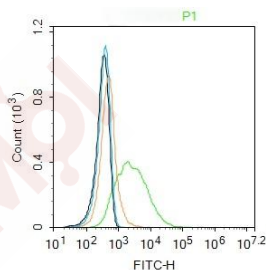
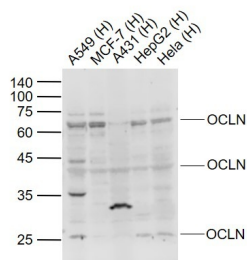
Observed band size: 65/38/28 kDa

3. Blank control: MCF7. Primary Antibody (green line): Rabbit Anti-OCN antibody (TMAB-01281)
Dilution: 2 μ g/ 10^6 cells;
Isotype Control Antibody (orange line): Rabbit IgG.
Secondary Antibody: Goat anti-rabbit IgG-FITC
Dilution: 1 μ g/test.

Protocol

The cells were incubated in 5% BSA to block non-specific protein-protein interactions for 30 min at room temperature. Cells stained with Primary Antibody for 30 min at room temperature. The secondary antibody used for 40 min at room temperature.





Application: FCM, WB

Recommended WB: 1:500-2000; FCM: 2µg/Test

Properties

Stability & Storage: Store at -20°C or -80°C for 12 months. Avoid repeated freeze-thaw cycles.

Shipping: Shipping with blue ice.

Antigen Details

Immunogen: KLH conjugated synthetic peptide: mouse OCLN

Antigen Species: Mouse

Gene ID: 18260

Uniprot ID: Q61146

Synonyms: Occludin

Biology Area: Tight Junctions

Research Background

This gene encodes an integral membrane protein which is located at tight junctions. This protein may be involved in the formation and maintenance of the tight junction. The possibility of several alternatively spliced products has been suggested but the full nature of these products has not been described. [provided by RefSeq].

Inhibitor · Natural Compounds · Compound Libraries · Recombinant Proteins

This product is for Research Use Only · Not for Human or Veterinary or Therapeutic Use

Tel: 781-999-4286

E_mail: info@targetmol.com

Address: 34 Washington Street, Wellesley Hills, MA 02481