

## Anti-OCN Polyclonal Antibody

### Product Details

Ig Type:	IgG
Reactivity:	Mouse,Rat(predicted:Human)
Molecular Weight:	Theoretical: 59 kDa. Actual: 65 kDa.
Purification:	Protein A purified

### Applications

1. Blank control: Mouse kidney.

Primary Antibody (green line): Rabbit Anti-Occludin antibody (TMAB-01280)

Dilution: 3  $\mu\text{g}/10^6$  cells;

Isotype Control Antibody (orange line): Rabbit IgG.

Secondary Antibody: Goat anti-rabbit IgG-PE

Dilution: 1  $\mu\text{g}/\text{test}$ .

Protocol

The cells were incubated in 5% BSA to block non-specific protein-protein interactions for 30 min at room temperature. Cells stained with Primary Antibody for 30 min at room temperature.

The secondary antibody used for 40 min at room temperature.

2. Sample:

Lane 1: A549 (Human) Cell Lysate at 30  $\mu\text{g}$

Lane 2: HepG2 (Human) Cell Lysate at 30  $\mu\text{g}$

Lane 3: Hela (Human) Cell Lysate at 30  $\mu\text{g}$

Primary: Anti-Occludin (TMAB-01280) at 1/1000 dilution

Secondary: IRDye800CW Goat Anti-Rabbit IgG at 1/20000 dilution

Predicted band size: 65/55/38/28 kDa

Observed band size: 62/52/40/25 kDa

3. Blank control: MCF7. Primary Antibody (green line): Rabbit Anti-Occludin antibody (TMAB-01280)

Dilution: 1  $\mu\text{g}/10^6$  cells;

Isotype Control Antibody (orange line): Rabbit IgG.

Secondary Antibody: Goat anti-rabbit IgG-FITC

Dilution: 1  $\mu\text{g}/\text{test}$ .

Protocol

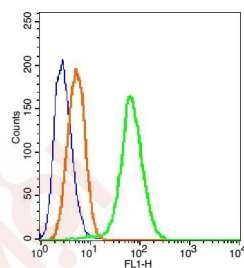
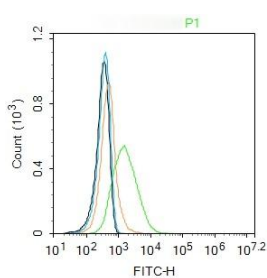
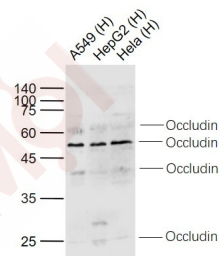
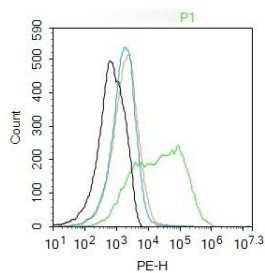
The cells were incubated in 5% BSA to block non-specific protein-protein interactions for 30 min at room temperature. Cells stained with Primary Antibody for 30 min at room temperature. The secondary antibody used for 40 min at room temperature.

4. Blank control (blue): 293t (fixed with 2% paraformaldehyde (10 min) and then permeabilized with ice-cold 90% methanol for 30 min on ice). Primary Antibody: Rabbit Anti-Occludin/FITC

Conjugated antibody (TMAB-01280/FITC), Dilution: 1  $\mu\text{g}$  in 100  $\mu\text{L}$  1X PBS containing 0.5% BSA;

Isotype Control Antibody: Rabbit IgG/FITC (orange),used under the same conditions.

Verified Activity:



Application: FCM,WB  
 Recommended WB: 1:500-2000; FCM: 2µg/Test

### Properties

Stability & Storage: Store at -20°C or -80°C for 12 months. Avoid repeated freeze-thaw cycles.

Shipping: Shipping with blue ice.

### Antigen Details

Immunogen: KLH conjugated synthetic peptide: human Occludin  
 Antigen Species: Human  
 Gene ID: 100506658  
 Uniprot ID: Q16625  
 Synonyms: MGC34277;BLCPMG;Occludin1;Occludin, Occludin-1;FLJ77961;Occludin;FLJ18079;FLJ94056;FLJ08163;Tight junction protein occludin  
 Biology Area: Tight Junctions

Research Background

This gene encodes an integral membrane protein which is located at tight junctions. This protein may be involved in the formation and maintenance of the tight junction. The possibility of several alternatively spliced products has been suggested but the full nature of these products has not been described. [provided by RefSeq].

**Inhibitor · Natural Compounds · Compound Libraries · Recombinant Proteins**

This product is for Research Use Only· Not for Human or Veterinary or Therapeutic Use

Tel:781-999-4286 E\_mail:info@targetmol.com Address:34 Washington Street,Wellesley Hills,MA 02481