

## Anti-NUMA1 Antibody (6H53)

## Product Details

|                   |  |
|-------------------|--|
| Ig Type:          | IgG                                    |
| Reactivity:       | Human,Mouse,Rat                        |
| Molecular Weight: | Theoretical: 238 kDa. Actual: 238 kDa. |
| Clone:            | 6H53                                   |
| Purification:     | Protein A purified                     |

## Applications

## Verified Activity:

1. 4% Paraformaldehyde-fixed MCF-7 (H) cell; Triton X-100 at RT for 20 min; Antibody incubation with (NUMA1) monoclonal Antibody, unconjugated (TMAB-01276) 1:100, 90 min at 37°C; followed by conjugated Goat Anti-Rabbit IgG antibody (green ) at 37°C for 90 min, DAPI (blue) was used to stain the cell nucleus. PBS instead of the primary antibody was used as the blank control.
2. 25 µg total protein per Lane of various lysates probed with NUMA1 monoclonal antibody, unconjugated (TMAB-01276) at 1:1000 dilution and 4°C overnight incubation. Followed by conjugated secondary antibody incubation at RT for 60 min.
3. Paraformaldehyde-fixed, paraffin embedded Mouse testicles; Antigen retrieval by boiling in sodium citrate buffer (pH6.0) for 15 min; Antibody incubation with NUMA1 Monoclonal Antibody, Unconjugated (TMAB-01276) at 1:200 overnight at 4°C, followed by conjugation to the secondary antibody and DAB staining.
4. Paraformaldehyde-fixed, paraffin embedded Mouse small intestine; Antigen retrieval by boiling in sodium citrate buffer (pH6.0) for 15 min; Antibody incubation with NUMA1 Monoclonal Antibody, Unconjugated (TMAB-01276) at 1:200 overnight at 4°C, followed by conjugation to the secondary antibody and DAB staining.
5. Paraformaldehyde-fixed, paraffin embedded Rat testicles; Antigen retrieval by boiling in sodium citrate buffer (pH6.0) for 15 min; Antibody incubation with NUMA1 Monoclonal Antibody, Unconjugated (TMAB-01276) at 1:200 overnight at 4°C, followed by conjugation to the secondary antibody and DAB staining.
6. Paraformaldehyde-fixed, paraffin embedded Rat thyroid gland; Antigen retrieval by boiling in sodium citrate buffer (pH6.0) for 15 min; Antibody incubation with NUMA1 Monoclonal Antibody, Unconjugated (TMAB-01276) at 1:200 overnight at 4°C, followed by conjugation to the secondary antibody and DAB staining.
7. Paraformaldehyde-fixed, paraffin embedded Rat breast; Antigen retrieval by boiling in sodium citrate buffer (pH6.0) for 15 min; Antibody incubation with NUMA1 Monoclonal Antibody, Unconjugated (TMAB-01276) at 1:200 overnight at 4°C, followed by conjugation to the secondary antibody and DAB staining.
8. Paraformaldehyde-fixed, paraffin embedded Human colon cancer; Antigen retrieval by boiling in sodium citrate buffer (pH6.0) for 15 min; Antibody incubation with NUMA1 Monoclonal Antibody, Unconjugated (TMAB-01276) at 1:200 overnight at 4°C, followed by conjugation to the secondary antibody and DAB staining.
9. Paraformaldehyde-fixed, paraffin embedded Human prostate tumor; Antigen retrieval by boiling in sodium citrate buffer (pH6.0) for 15 min; Antibody incubation with NUMA1 Monoclonal Antibody, Unconjugated (TMAB-01276) at 1:200 overnight at 4°C, followed by conjugation to the secondary antibody and DAB staining.

10. Paraformaldehyde-fixed, paraffin embedded Human testicles; Antigen retrieval by boiling in sodium citrate buffer (pH6.0) for 15 min; Antibody incubation with NUMA1 Monoclonal Antibody, Unconjugated (TMAB-01276) at 1:200 overnight at 4°C, followed by conjugation to the secondary antibody and DAB staining.

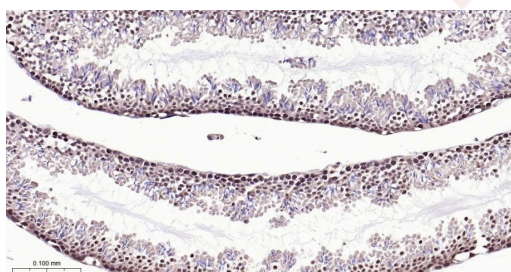
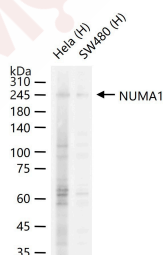
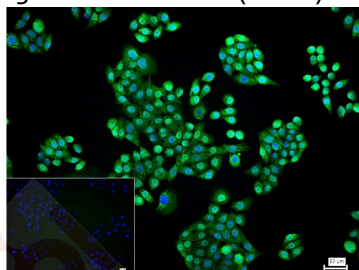
11. Paraformaldehyde-fixed, paraffin embedded Human breast; Antigen retrieval by boiling in sodium citrate buffer (pH6.0) for 15 min; Antibody incubation with NUMA1 Monoclonal Antibody, Unconjugated (TMAB-01276) at 1:200 overnight at 4°C, followed by conjugation to the secondary antibody and DAB staining.

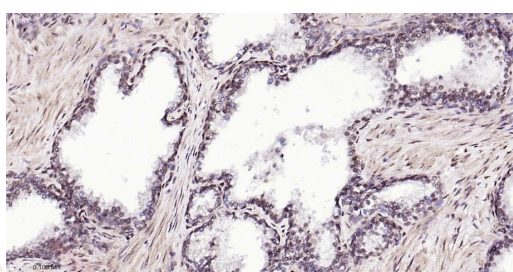
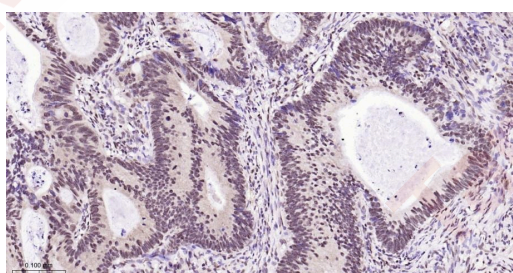
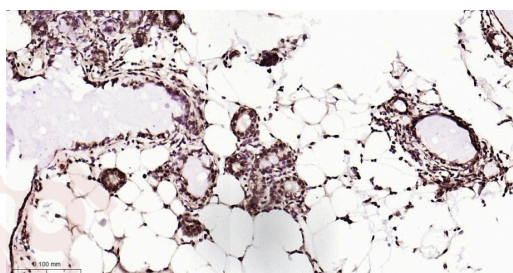
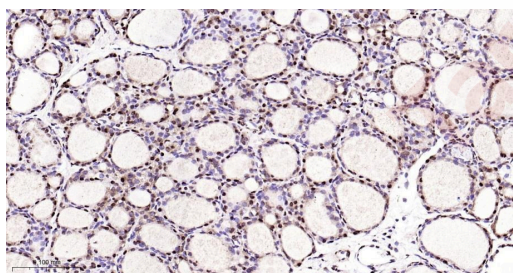
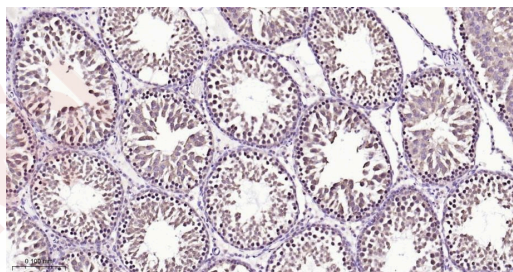
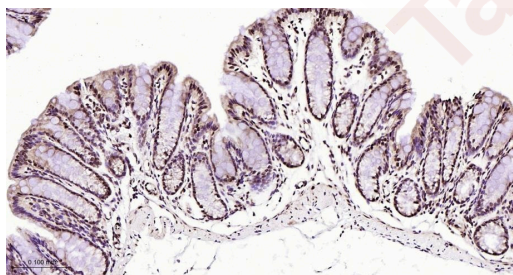
12. Paraformaldehyde-fixed, paraffin embedded Human Breast Cancer; Antigen retrieval by boiling in sodium citrate buffer (pH6.0) for 15 min; Antibody incubation with NUMA1 Monoclonal Antibody, Unconjugated (TMAB-01276) at 1:200 overnight at 4°C, followed by conjugation to the secondary antibody and DAB staining.

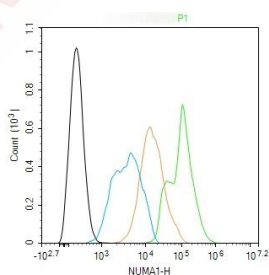
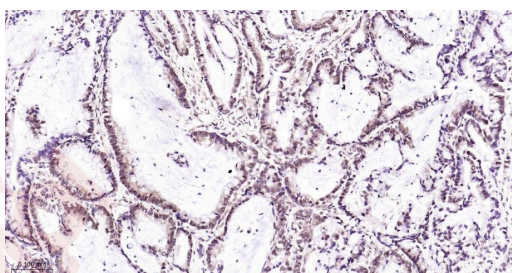
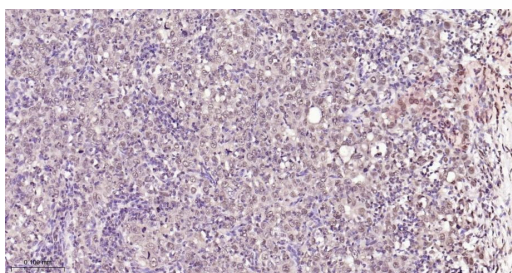
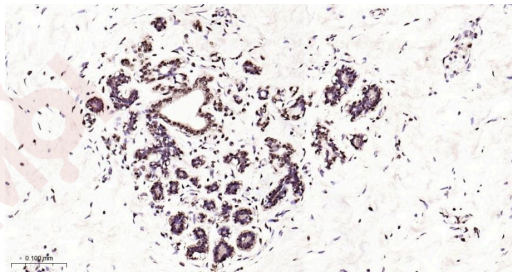
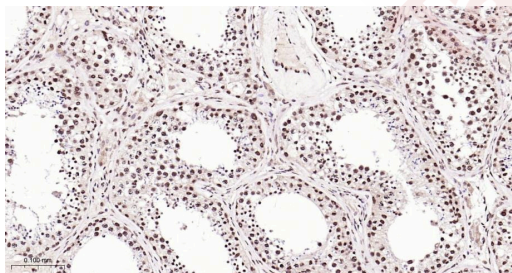
13. Paraformaldehyde-fixed, paraffin embedded Human gastric cancer; Antigen retrieval by boiling in sodium citrate buffer (pH6.0) for 15 min; Antibody incubation with NUMA1 Monoclonal Antibody, Unconjugated (TMAB-01276) at 1:200 overnight at 4°C, followed by conjugation to the secondary antibody and DAB staining.

14. The Hela (H) cells were fixed with 4% PFA (10 min at room temperature) and then permeabilized with 90% ice-cold methanol for 20 min at -20°C, the cells then were incubated in 5% BSA to block non-specific protein-protein interactions (30 min at room temperature).

Primary Antibody (green): Rabbit Anti-NUMA1 antibody (TMAB-01276, 1:100); Secondary Antibody (white blue): Goat anti-Rabbit IgG-BF488: 1 µg/test. Isotype Control (orange): Rabbit IgG. Blank control (black): PBS.







Application: ELISA,FCM,ICC/IF,IF,IHC-Fr,IHC-P,WB

Recommended WB=1:500-2000,IHC-P=1:100-500,IHC-F=1:100-500,ICC/IF=1:50-200,IF=1:100-500,ELISA=1:5000-20000,Flow-Cyt=1:50-100

**Properties**

Stability & Storage: Store at 2°C-8°C for 1 month. Store at -20°C or -80°C for 12 months. Avoid repeated freeze-thaw cycles.

Shipping: Shipping with blue ice.

### Antigen Details

|                  |  |
|------------------|--|
| Immunogen:       | KLH conjugated synthetic peptide: human NUMA1  |
| Antigen Species: | Human  |
| Gene ID:         | 4926   |
| Uniprot ID:      | Q14980   |
| Synonyms:        | Nuclear mitotic apparatus protein;NuMA protein;NMP-22;SP-H antigen;NUMA;NUMA 1;NMP22;Nuclear mitotic apparatus protein 1;Nuclear matrix protein-22 |
| Biology Area:    | Spindle,Markers  |

---

### Research Background

Microtubule (MT)-binding protein that plays a role in the formation and maintenance of the spindle poles and the alignment and the segregation of chromosomes during mitotic cell division. Functions to tether the minus ends of MTs at the spindle poles, which is critical for the establishment and maintenance of the spindle poles

**Inhibitor · Natural Compounds · Compound Libraries · Recombinant Proteins**

This product is for Research Use Only · Not for Human or Veterinary or Therapeutic Use

Tel:781-999-4286 E\_mail:info@targetmol.com Address:34 Washington Street,Wellesley Hills,MA 02481