

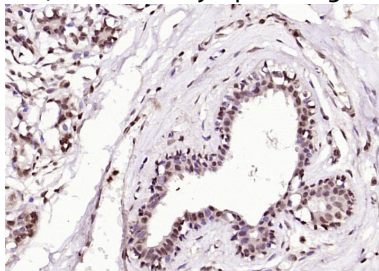
Anti-NUMA1 Polyclonal Antibody

Product Details

Ig Type:	IgG
Reactivity:	Human (predicted:Mouse,Rat,Dog)
Molecular Weight:	Theoretical: 238 kDa.
Purification:	Protein A purified

Applications

Verified Activity: Paraformaldehyde-fixed, paraffin embedded (human breast); Antigen retrieval by boiling in sodium citrate buffer (pH6.0) for 15 min; Block endogenous peroxidase by 3% hydrogen peroxide for 20 min; Blocking buffer (normal goat serum) at 37°C for 30 min; Antibody incubation with (NuMA) Polyclonal Antibody, Unconjugated (TMAB-01275) at 1:200 overnight at 4°C, followed by operating according to SP Kit (Rabbit) instructions and DAB staining.



Application:	IF,IHC-Fr,IHC-P
Recommended	IHC-P: 1:100-500; IHC-Fr: 1:100-500; IF: 1:100-500

Properties

Stability & Storage:	Store at -20°C or -80°C for 12 months. Avoid repeated freeze-thaw cycles.
Shipping:	Shipping with blue ice.

Antigen Details

Immunogen:	KLH conjugated synthetic peptide: human NuMA
Antigen Species:	Human
Gene ID:	4926
Uniprot ID:	Q14980
Synonyms:	NMP22;Nuclear matrix protein-22;Nuclear mitotic apparatus protein 1;SP-H antigen;Nuclear mitotic apparatus protein;NuMA protein;NMP-22;NUMA;NUMA 1
Biology Area:	Spindle,Markers

Research Background

Healthy individuals generally have very small amounts of NMP22 protein in the urine. However, the level of NMP22 protein is often elevated in the urine of patients with bladder cancer, even at early stages of the disease.¹ The Alere NMP22 Test is an enzyme immunoassay for the quantitative determination of nuclear mitotic apparatus protein (NuMA) in stabilized voided urine. NuMA is an abundant component of the nuclear matrix proteins (NMP22). The

A DRUG SCREENING EXPERT

Alere NMP22?BladderChek?Test is the only in-office test approved by the FDA as an aid in the diagnosis and monitoring of bladder cancer in conjunction with standard diagnostic procedures. Both assays are painless and non-invasive and detect elevated levels of NMP22 protein.

Inhibitor · Natural Compounds · Compound Libraries · Recombinant Proteins

This product is for Research Use Only· Not for Human or Veterinary or Therapeutic Use

Tel:781-999-4286 E_mail:info@targetmol.com Address:34 Washington Street,Wellesley Hills,MA 02481