

## Anti-NRF1 Polyclonal Antibody

## Product Details

Ig Type:	IgG
Reactivity:	Human,Mouse,Rat
Molecular Weight:	Theoretical: 55 kDa. Actual: 55 kDa.
Purification:	Protein A purified

## Applications

1. Blank control: Jurkat.

Primary Antibody (green line): Rabbit Anti-Iba1 antibody (TMAB-01270)

Dilution: 1 µg/Test;

Secondary Antibody: Goat anti-rabbit IgG-FITC

Dilution: 0.5 µg/Test.

Protocol

The cells were fixed with 4% PFA (10 min at room temperature) and then permeabilized with 90% ice-cold methanol for 20 min at -20°C. The cells were then incubated in 5% BSA to block non-specific protein-protein interactions for 30 min at room temperature. Cells stained with Primary Antibody for 30 min at room temperature. The secondary antibody used for 40 min at room temperature.

2. HeLa cell; 4% Paraformaldehyde-fixed; Triton X-100 at room temperature for 20 min; Blocking buffer (normal goat serum) at 37°C for 20 min; Antibody incubation with (NRF1) polyclonal Antibody, Unconjugated (TMAB-01270) 1:100, 90 minutes at 37°C; followed by a conjugated Goat Anti-Rabbit IgG antibody at 37°C for 90 minutes, DAPI (blue) was used to stain the cell nucleus.

Verified Activity:

3. Tissue/cell: rat brain tissue; 4% Paraformaldehyde-fixed and paraffin-embedded;

Antigen retrieval: citrate buffer (0.01M, pH6.0), Boiling bathing for 15 min; Block endogenous peroxidase by 3% Hydrogen peroxide for 30 min; Blocking buffer (normal goat serum) at 37°C for 20 min;

Incubation: Anti-NRF-1 Polyclonal Antibody, Unconjugated (TMAB-01270) 1:200, overnight at 4°C, followed by conjugation to the secondary antibody and DAb staining.

4. Sample:

Lane1: Heart (Mouse) Lysate at 30 µg

Lane2: Muclle (Mouse) Lysate at 30 µg

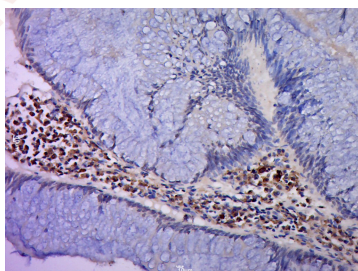
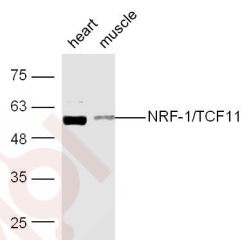
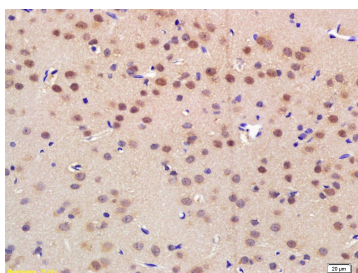
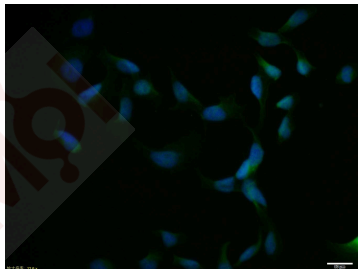
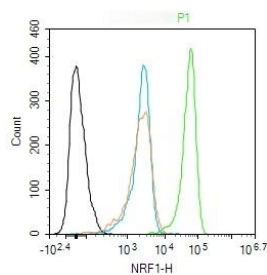
Primary: Anti-NRF-1/TCF11 (TMAB-01270) at 1/300 dilution

Secondary: IRDye800CW Goat Anti-Rabbit IgG at 1/20000 dilution

Predicted band size: 55 kDa

Observed band size: 55 kDa

5. Paraformaldehyde-fixed, paraffin embedded (Human colon cancer); Antigen retrieval by boiling in sodium citrate buffer (pH6.0) for 15 min; Block endogenous peroxidase by 3% hydrogen peroxide for 20 min; Blocking buffer (normal goat serum) at 37°C for 30 min; Antibody incubation with (NRF1) Polyclonal Antibody, Unconjugated (TMAB-01270) at 1:400 overnight at 4°C, followed by a conjugated secondary for 20 min and DAB staining.



Application: FCM, ICC/IF, IHC-Fr, IHC-P, WB

Recommended FCM=1 µg/Test; ICC/IF=1:100-500; IF=1:100-500; IHC-Fr=1:100-500; IHC-P=1:100-500; WB=1:500-2000

### Properties

Stability & Storage: Store at -20°C or -80°C for 12 months. Avoid repeated freeze-thaw cycles.

Shipping: Shipping with blue ice.

### Antigen Details

Immunogen:	KLH conjugated synthetic peptide: human NRF1
Antigen Species:	Human
Gene ID:	4899
Uniprot ID:	Q16656
Synonyms:	NF2L1;TCF-11;NRF-1;Nuclear factor;Transcription factor HBZ17;NFE2L1;NFE2-related factor 1;NF-E2-related factor 1;erythroid derived 2;Locus control region-factor 1;Transcription factor LCR F1;Nuclear factor erythroid derived 2 like 1;Nuclear factor erythroid 2-related factor 1;Transcription factor LCR-F1;TCF11;Transcription factor 11
Biology Area:	ChIP antibodies,Other factors,Pol II Transcription,Transcription Factors,Mitochondrial transcription,Mitochondrial Biogenesis

---

### Research Background

This gene encodes a protein that homodimerizes and functions as a transcription factor which activates the expression of some key metabolic genes regulating cellular growth and nuclear genes required for respiration, heme biosynthesis, and mitochondrial DNA transcription and replication. The protein has also been associated with the regulation of neurite outgrowth. Alternative splicing results in multiple transcript variants. Confusion has occurred in bibliographic databases due to the shared symbol of NRF1 for this gene and for "nuclear factor (erythroid-derived 2)-like 1" which has an official symbol of NFE2L1. [provided by RefSeq, May 2014]

**Inhibitor · Natural Compounds · Compound Libraries · Recombinant Proteins**

This product is for Research Use Only · Not for Human or Veterinary or Therapeutic Use

Tel:781-999-4286 E\_mail:info@targetmol.com Address:34 Washington Street,Wellesley Hills,MA 02481