

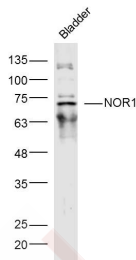
## Anti-NR4A3 Polyclonal Antibody

### Product Details

Ig Type: IgG  
Reactivity: Mouse (predicted:Human,Rat,Dog,Rabbit)  
Molecular Weight: Theoretical: 68 kDa. Actual: 68 kDa.  
Purification: Protein A purified

### Applications

Sample:  
Bladder (Mouse) Lysate at 40 µg  
Verified Activity: Primary: Anti-NOR1 (TMAB-01269) at 1/300 dilution  
Secondary: IRDye800CW Goat Anti-Rabbit IgG at 1/20000 dilution  
Predicted band size: 68 kDa  
Observed band size: 68 kDa



Application: WB  
Recommended WB: 1:500-2000

### Properties

Stability & Storage: Store at -20°C or -80°C for 12 months. Avoid repeated freeze-thaw cycles.  
Shipping: Shipping with blue ice.

### Antigen Details

Immunogen: KLH conjugated synthetic peptide: human NOR1  
Antigen Species: Human  
Gene ID: 8013  
Uniprot ID: Q92570  
Synonyms: CHN;Mitogen-induced nuclear orphan receptor;CSMF;Neuron-derived orphan receptor 1; Nuclear receptor subfamily 4 group A member 3;NOR1;Nuclear hormone receptor NOR-1;TEC; MINOR  
Biology Area: Orphan Nuclear Receptors,Neurogenesis

### Research Background

Nur77 (also designated NGFI-B), Nurr1 (Nur-related factor 1), and NOR-1 (neuron-derived orphan receptor 1) constitute the NGFI-B subfamily within the nuclear receptor superfamily. Ligands for these protein have not been

identified, and, therefore, they are designated "orphan nuclear receptors". Genes of the NGFI-B subfamily are classified as immediate-early genes, which are induced rapidly, but transiently, in response to a variety of stimuli. They have been implicated in cell proliferation, differentiation, and apoptosis. The human NOR-1 gene maps to chromosome 9q, and encodes a protein which is expressed in heart, skeletal muscle, thymus, and spleen as well as in brain, where it is developmentally regulated. Therefore, NOR-1 may be involved in regulating neural differentiation. The NOR-1 gene also undergoes chromosomal translocation with the EWS gene to produce a protein thought to affect pre-mRNA splicing.

**Inhibitor · Natural Compounds · Compound Libraries · Recombinant Proteins**

This product is for Research Use Only · Not for Human or Veterinary or Therapeutic Use

Tel:781-999-4286 E\_mail:info@targetmol.com Address:34 Washington Street,Wellesley Hills,MA 02481