

Anti-NR1H4 Polyclonal Antibody

Product Details

Ig Type:	IgG
Reactivity:	Human, Mouse (predicted: Rat, Dog, Pig, Cow, Horse, Sheep)
Molecular Weight:	Theoretical: 56 kDa. Actual: 50 kDa.
Purification:	Protein A purified

Applications

1. Blank control: A549. Primary Antibody (green line): Rabbit Anti-NR1H4 antibody (TMAB-01264)

Dilution: 1 $\mu\text{g}/10^6$ cells;

Isotype Control Antibody (orange line): Rabbit IgG.

Secondary Antibody: Goat anti-rabbit IgG-PE

Dilution: 3 $\mu\text{g}/\text{test}$.

Protocol

The cells were fixed with 4% PFA (10 min at room temperature) and then permeabilized with 90% ice-cold methanol for 20 min at -20°C . The cells were then incubated in 5% BSA to block non-specific protein-protein interactions for 30 min at room temperature. Cells stained with Primary Antibody for 30 min at room temperature. The secondary antibody used for 40 min at room temperature.

2. Sample:

Lane 1: Mouse Kidney tissue lysates

Lane 2: Mouse Pancreas tissue lysates

Lane 3: Rat Liver tissue lysates

Lane 4: Human HepG2 cell lysates

Lane 5: Human MCF-7 cell lysates

Verified Activity:

Primary: Anti-NR1H4 (TMAB-01264) at 1/1000 dilution

Secondary: IRDye800CW Goat Anti-Rabbit IgG at 1/20000 dilution

Predicted band size: 56 kDa

Observed band size: 50 kDa

3. Blank control (black line): HepG2. Primary Antibody (green line): Rabbit Anti-NR1H4 antibody (TMAB-01264)

Dilution: 2 $\mu\text{g}/\text{Test}$;

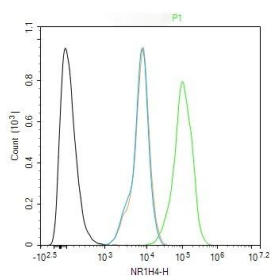
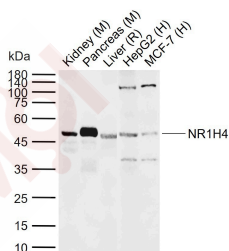
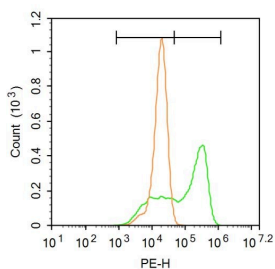
Secondary Antibody (white blue line): Goat anti-rabbit IgG-AF488

Dilution: 0.5 $\mu\text{g}/\text{Test}$.

Isotype control (orange line): Normal Rabbit IgG

Protocol

The cells were fixed with 4% PFA (10 min at room temperature) and then permeabilized with 90% ice-cold methanol for 20 min at -20°C . The cells were then incubated in 5% BSA to block non-specific protein-protein interactions for 30 min at room temperature. Cells stained with Primary Antibody for 30 min at room temperature. The secondary antibody used for 40 min at room temperature.



Application: FCM, ICC/IF, WB

Recommended FCM=2 µg/Test; ICC/IF=1:50-200; WB=1:500-2000

Properties

Stability & Storage: Store at -20°C or -80°C for 12 months. Avoid repeated freeze-thaw cycles.

Shipping: Shipping with blue ice.

Antigen Details

Immunogen: KLH conjugated synthetic peptide: human FXR/Bile Acid Receptor NR1H4

Antigen Species: Human

Gene ID: 9971

Uniprot ID: Q96RI1

Synonyms: BAR;nuclear receptor subfamily 1, group H, member 4;HRR-1;RIP14;FXR;HRR1

Biology Area: Orphan Nuclear Receptors, Energy Metabolism, Energy Metabolism, Lipid metabolism

Research Background

The steroid receptor superfamily acts through direct association with DNA sequences known as hormone response elements (HREs) and binds DNA as either homo- or heterodimers. The promiscuous mediator of heterodimerization, RXR, is the receptor for 9-cis retinoic acid, and dimerizes with VDR, TR, PPAR, and several novel receptors including LXR (also referred to as RLD-1) and FXR. FXR and LXR fall into a category of proteins termed "orphan receptors" because of their lack of a defined function, and in the case of LXR, the lack of a defined ligand. FXR has been shown to bind a class of lipid molecules called farnesoids. LXR/RXR heterodimers have highest affinity for DR-4 DNA elements while FXR/RXR heterodimers bind IR-1 elements. Both LXR/RXR and FXR/RXR heterodimers retain their responsiveness to 9-cis retinoic acid.

Inhibitor · Natural Compounds · Compound Libraries · Recombinant Proteins

This product is for Research Use Only · Not for Human or Veterinary or Therapeutic Use

Tel:781-999-4286 E_mail:info@targetmol.com Address:34 Washington Street,Wellesley Hills,MA 02481