

Anti-NR1D1 Polyclonal Antibody

Product Details

Ig Type:	IgG
Reactivity:	Human,Mouse,Rat (predicted:Cow,Rabbit,Sheep)
Molecular Weight:	Theoretical: 67 kDa. Actual: 67 kDa.
Purification:	Protein A purified

Applications

1. Sample:

BRL-3A (Rat) Cell Lysate at 40 µg

Primary: Anti-NR1D1 (TMAB-01263) at 1/300 dilution

Secondary: IRDye800CW Goat Anti-Rabbit IgG at 1/20000 dilution

Predicted band size: 67 kDa

Observed band size: 67 kDa

2. Paraformaldehyde-fixed, paraffin embedded (Mouse brain); Antigen retrieval by boiling in sodium citrate buffer (pH6.0) for 15 min; Block endogenous peroxidase by 3% hydrogen peroxide for 20 min; Blocking buffer (normal goat serum) at 37°C for 30 min; Antibody incubation with (NR1D1) Polyclonal Antibody, Unconjugated (TMAB-01263) at 1:400 overnight at 4°C, followed by operating according to SP Kit (Rabbit) instructions and DAB staining.

3. Tissue/cell: human laryngeal tissue; 4% Paraformaldehyde-fixed and paraffin-embedded; Antigen retrieval: citrate buffer (0.01M, pH6.0), Boiling bathing for 15 min; Block endogenous peroxidase by 3% Hydrogen peroxide for 30 min; Blocking buffer (normal goat serum) at 37°C for 20 min;

Incubation: Anti-NR1D1 Polyclonal Antibody, Unconjugated (TMAB-01263) 1:200, overnight at 4°C, followed by conjugation to the secondary antibody and DAb staining.

Verified Activity:

4. Tissue/cell: rat brain tissue; 4% Paraformaldehyde-fixed and paraffin-embedded; Antigen retrieval: citrate buffer (0.01M, pH6.0), Boiling bathing for 15 min; Block endogenous peroxidase by 3% Hydrogen peroxide for 30 min; Blocking buffer (normal goat serum) at 37°C for 20 min;

Incubation: Anti-NR1D1/REV-ERB alpha Polyclonal Antibody, Unconjugated (TMAB-01263) 1:200, overnight at 4°C, followed by conjugation to the secondary antibody and DAb staining.

5. Blank control (black line): Hela.

Primary Antibody (green line): Rabbit Anti-NR1D1 antibody (TMAB-01263)

Dilution: 1 µg/Test;

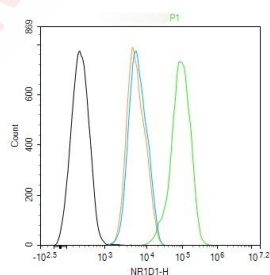
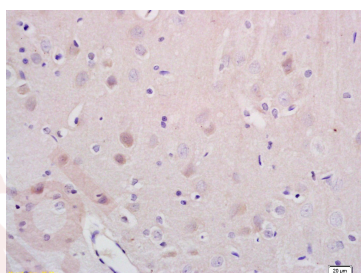
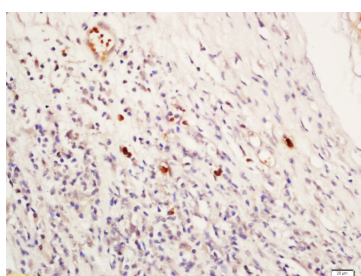
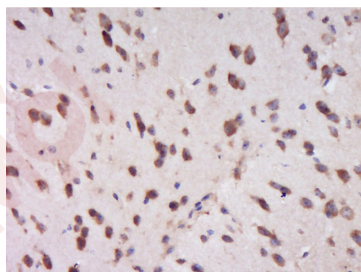
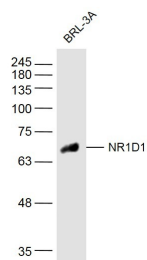
Secondary Antibody (white blue line): Goat anti-rabbit IgG-AF488

Dilution: 0.5 µg/Test.

Isotype control (orange line): Normal Rabbit IgG

Protocol

The cells were fixed with 4% PFA (10 min at room temperature) and then permeabilized with 90% ice-cold methanol for 20 min at -20°C, The cells were then incubated in 5% BSA to block non-specific protein-protein interactions for 30 min at room temperature. Cells stained with Primary Antibody for 30 min at room temperature. The secondary antibody used for 40 min at room temperature.



Application: FCM,IF,IHC-Fr,IHC-P,WB

Recommended WB: 1:500-2000; IHC-P: 1:100-500; IHC-Fr: 1:100-500; IF: 1:100-500; FCM: 1ug/Test

Properties

Stability & Storage: Store at -20°C or -80°C for 12 months. Avoid repeated freeze-thaw cycles.

Shipping: Shipping with blue ice.

Antigen Details

Immunogen:	KLH conjugated synthetic peptide: human NR1D1
Antigen Species:	Human
Gene ID:	9572
Synonyms:	EAR1;REV-ERBalpha;EAR-1;Rev-erbA-alpha;Nuclear receptor subfamily 1 group D member 1; Rev erbAalpha;THRAL;Thyroid hormone receptor alpha-like;V-erbA-related protein 1;ERBA-RELATED 1;Thyroid hormone receptor, alpha like;THRA1;NR1D1;Nuclear Receptor Rev-ErbA alpha;Rev erbalpha;Orphan nuclear receptor NR1D1;Rev-ErbAalpha;hRev;V-erbA related protein EAR-1
Biology Area:	Orphan Nuclear Receptors,Thyroid axis,Hormones

Research Background

NR1D1, a NR1 Thyroid Hormone-Like Receptor, is encoded by the same genomic locus as, but transcribed from the opposite strand of, Thyroid Hormone Receptor Alpha (TR Alpha). NR1D1 is a target of Nuclear Receptor ROR Alpha and a transcription regulator that has been shown to affect myocyte differentiation, adipogenesis, and lipoprotein metabolism. Mice lacking NR1D1 show abnormal postnatal cerebellar development. NR1D1 expression has been documented in human skeletal muscle and a variety of mouse and rat tissues. ESTs have been isolated from human tissue libraries, including cancerous adrenal, blood, brain, breast, colon, duodenum, fetus, head/neck, kidney, lung, skeletal muscle, skin, synovium, uterus, normal brain, breast, colon, eye, heart, pancreas, pituitary, prostate, skeletal muscle, skin, testis and thyroid.

Inhibitor · Natural Compounds · Compound Libraries · Recombinant Proteins

This product is for Research Use Only · Not for Human or Veterinary or Therapeutic Use

Tel:781-999-4286 E_mail:info@targetmol.com Address:34 Washington Street,Wellesley Hills,MA 02481