

Anti-NPY2R Polyclonal Antibody

Product Details

Ig Type:	IgG
Reactivity:	Human,Mouse,Rat (predicted:Pig)
Molecular Weight:	Theoretical: 43 kDa. Actual: 43 kDa.
Purification:	Protein A purified

Applications

1. Tissue/cell: rat brain tissue; 4% Paraformaldehyde-fixed and paraffin-embedded; Antigen retrieval: citrate buffer (0.01M, pH6.0), Boiling bathing for 15 min; Block endogenous peroxidase by 3% Hydrogen peroxide for 30 min; Blocking buffer (normal goat serum) at 37°C for 20 min; Incubation: Anti-NPY2R Polyclonal Antibody, Unconjugated (TMAB-01260) 1:200, overnight at 4°C, followed by conjugation to the secondary antibody and DAb staining.

2. Sample: A549 Cell Lysate at 30 µg

Primary: Anti-NPY2R (TMAB-01260) at 1/300 dilution

Secondary: IRDye800CW Goat Anti-Rabbit IgG at 1/20000 dilution

Predicted band size: 43 kDa

Observed band size: 43 kDa

3. Sample:

Lane 1: Mouse Cerebrum tissue lysates

Lane 2: Rat Cerebrum tissue lysates

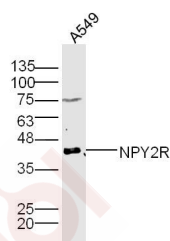
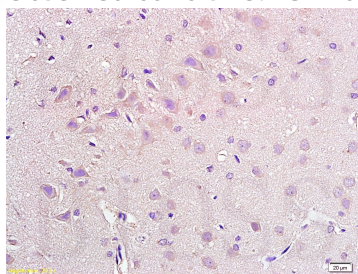
Primary: Anti-NPY2R (TMAB-01260) at 1/1000 dilution

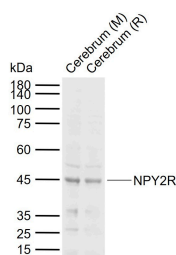
Secondary: IRDye800CW Goat Anti-Rabbit IgG at 1/20000 dilution

Predicted band size: 43 kDa

Observed band size: 45 kDa

Verified Activity:





Application: IF,IHC-Fr,IHC-P,WB

Recommended WB: 1:500-2000; IHC-P: 1:100-500; IHC-Fr: 1:100-500; IF: 1:100-500

Properties

Stability & Storage: Store at -20°C or -80°C for 12 months. Avoid repeated freeze-thaw cycles.

Shipping: Shipping with blue ice.

Antigen Details

Immunogen: KLH conjugated synthetic peptide: human NPY2R

Antigen Species: Human

Gene ID: 4887

Uniprot ID: P49146

Synonyms: NPY2R;Neuropeptide Y receptor type 2;NPY-Y2 receptor (Y2 receptor);NPY2-R

Biology Area: Angiogenic Factors,Diabetes associated,Lipoprotein metabolism,Lipoprotein metabolism, Cancer,Diabetes,Heart disease,Receptors,More GPCR

Research Background

Neuropeptide Y (NPY), a peptide widely expressed in the brain, acts through the protein G-coupled receptors Y1, Y2 and Y5. This peptide modulates many important functions such as the control of energy balance and anxiety. Its involvement in brain development has been less investigated.

Neuropeptide Y (NPY) receptors are members of a G protein coupled receptor superfamily and they mediate a variety of physiological responses including feeding and vasoconstriction. The endogenous ligands of NPY receptors are a family of structurally related peptides, including NPY, peptide YY (PYY), and pancreatic polypeptide (PP). Increased activity of NPY and its receptors, Y1R, Y2R, and Y5R has been found in the brain in many forms of experimental obesity. Furthermore, several association studies have supported the association between NPY2R and obesity.

Inhibitor · Natural Compounds · Compound Libraries · Recombinant Proteins

This product is for Research Use Only · Not for Human or Veterinary or Therapeutic Use

Tel:781-999-4286 E_mail:info@targetmol.com Address:34 Washington Street,Wellesley Hills,MA 02481