

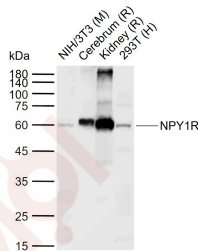
Anti-NPY1R Polyclonal Antibody

Product Details

Ig Type: IgG
 Reactivity: Human, Mouse, Rat
 Molecular Weight: Theoretical: 44 kDa. Actual: 60 kDa.
 Purification: Protein A purified

Applications

Sample:
 Lane 1: Mouse NIH/3T3 tissue lysates
 Lane 2: Rat Cerebrum tissue lysates
 Lane 3: Rat Kidney tissue lysates
 Lane 4: Human 293T cell lysates
 Verified Activity:
 Primary: Anti-NPY1R (TMAB-01259) at 1/1000 dilution
 Secondary: IRDye800CW Goat Anti-Rabbit IgG at 1/20000 dilution
 Predicted band size: 44 kDa
 Observed band size: 60 kDa



Application: ELISA, IHC-Fr, IHC-P, WB
 Recommended WB: 1:500-2000; IHC-P: 1:100-500; IHC-Fr: 1:100-500; ELISA: 1:5000-10000

Properties

Stability & Storage: Store at -20°C or -80°C for 12 months. Avoid repeated freeze-thaw cycles.
 Shipping: Shipping with blue ice.

Antigen Details

Immunogen: KLH conjugated synthetic peptide: human NPY1R
 Antigen Species: Human
 Gene ID: 4886
 Uniprot ID: P25929
 Synonyms: neuropeptide Y1 receptor; MGC109393; neuropeptide Y receptor Y1; Npy1r; NPY-1
 Biology Area: Blood Pressure regulation, Vasodilation, GPCR

Research Background

Neuropeptide Y (NPY) is one of the most abundant neuropeptides in the mammalian nervous system and exhibits a diverse range of important physiologic activities, including effects on psychomotor activity, food intake, regulation of central endocrine secretion, and potent vasoactive effects on the cardiovascular system. There are two major subtypes of NPY (Y1 and Y2). The NPY Y1 receptors have been identified in a variety of tissues, including brain, spleen, small intestine, kidney, testis, placenta, breast, colon, ganglion, heart, and aortic smooth muscle. The Y2 receptor is found mainly in the central nervous system. NPY receptors are a member of the G protein-coupled receptor superfamily.

Inhibitor · Natural Compounds · Compound Libraries · Recombinant Proteins

This product is for Research Use Only · Not for Human or Veterinary or Therapeutic Use

Tel: 781-999-4286 E_mail: info@targetmol.com Address: 34 Washington Street, Wellesley Hills, MA 02481