

Anti-NPFFR1 Polyclonal Antibody

Product Details

Ig Type:	IgG
Reactivity:	Human,Mouse,Rat (predicted:Dog,Pig,Cow,Horse,Rabbit,Sheep)
Molecular Weight:	Theoretical: 48 kDa. Actual: 48 kDa.
Purification:	Protein A purified

Applications

1. Paraformaldehyde-fixed, paraffin embedded (Rat brain); Antigen retrieval by boiling in sodium citrate buffer (pH6.0) for 15 min; Block endogenous peroxidase by 3% hydrogen peroxide for 20 min; Blocking buffer (normal goat serum) at 37°C for 30 min; Antibody incubation with (NPFF1 Receptor) Polyclonal Antibody, Unconjugated (TMAB-01257) at 1:400 overnight at 4°C, followed by operating according to SP Kit (Rabbit) instructions and DAB staining.

2. Sample:

U251 (Human) Cell Lysate at 30 µg

Primary: Anti-NPFF1 Receptor (TMAB-01257) at 1/300 dilution

Secondary: IRDye800CW Goat Anti-Rabbit IgG at 1/20000 dilution

Predicted band size: 48 kDa

Observed band size: 48 kDa

Verified Activity:

3. Paraformaldehyde-fixed, paraffin embedded (Mouse brain); Antigen retrieval by boiling in sodium citrate buffer (pH6.0) for 15 min; Block endogenous peroxidase by 3% hydrogen peroxide for 20 min; Blocking buffer (normal goat serum) at 37°C for 30 min; Antibody incubation with (NPFF1 Receptor) Polyclonal Antibody, Unconjugated (TMAB-01257) at 1:400 overnight at 4°C, followed by operating according to SP Kit (Rabbit) instructions and DAB staining.

4. Sample:

Lane 1: Mouse Cerebellum tissue lysates

Lane 2: Mouse Cerebrum tissue lysates

Lane 3: Rat Cerebellum tissue lysates

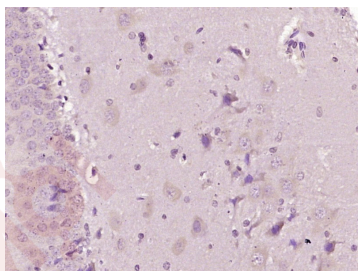
Lane 4: Rat Cerebrum tissue lysates

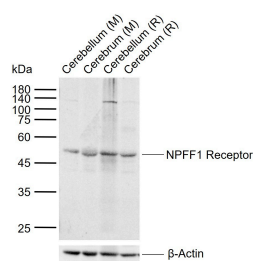
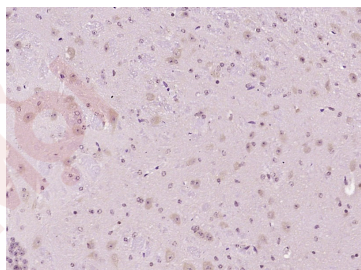
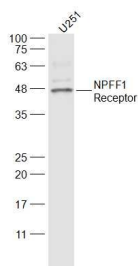
Primary: Anti-NPFF1 Receptor (TMAB-01257) at 1/1000 dilution

Secondary: IRDye800CW Goat Anti-Rabbit IgG at 1/20000 dilution

Predicted band size: 48 kDa

Observed band size: 48 kDa





Application: IF,IHC-Fr,IHC-P,WB

Recommended WB: 1:500-2000; IHC-P: 1:100-500; IHC-Fr: 1:100-500; IF: 1:100-500

Properties

Stability & Storage: Store at -20°C or -80°C for 12 months. Avoid repeated freeze-thaw cycles.

Shipping: Shipping with blue ice.

Antigen Details

Immunogen: KLH conjugated synthetic peptide: human GPR147/NPFF1 Receptor

Antigen Species: Human

Gene ID: 64106

Uniprot ID: Q9GZQ6

Synonyms: Neuropeptide FF receptor 1;NPFFR1;RFamide related peptide receptor OT7T022;NPFF1;GPR147; G-protein coupled receptor 147;NPFF1 Receptor;NPFF1R1

Research Background

Neuropeptide FF 1 Receptor (NPFF1 or hFF1) and Neuropeptide FF 2 Receptor (NPFF2) belong to the G protein-coupled receptor 1 family. Both NPFF1 and NPFF2 are integral membrane proteins that act as receptors for NPAF (A-18- F-amide) and NPFF (F-8-F-amide) neuropeptides. Both NPFF proteins may be activated by synthetic or naturally occurring FMRF-amide-like ligands. The receptors are mediated by association with G proteins that activate a phosphatidylinositol-calcium second messenger system. NPFF1 Receptors is highly expressed in the human hypothalamus and amygdala, indicating a possible role for NPFF1 in central autonomic and neuroendocrine control in the human brain. Based in part on NPFF2 Receptor expression in diencephalon and superficial layers of the spinal cord, NPFF2 Receptor is thought to be involved in the modulation of sensory input and opioid analgesia.

Inhibitor · Natural Compounds · Compound Libraries · Recombinant Proteins

This product is for Research Use Only · Not for Human or Veterinary or Therapeutic Use

Tel:781-999-4286 E_mail:info@targetmol.com Address:34 Washington Street,Wellesley Hills,MA 02481