

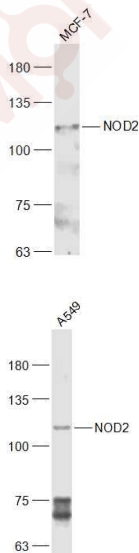
Anti-NOD2 Polyclonal Antibody

Product Details

Ig Type:	IgG
Reactivity:	Human (predicted:Mouse,Rat,Dog,Pig,Cow,Horse,Rabbit)
Molecular Weight:	Theoretical: 114 kDa. Actual: 114 kDa.
Purification:	Protein A purified

Applications

Verified Activity:	1. Sample: MCF-7 (Human) Cell Lysate at 30 µg Primary: Anti-NOD2 (TMAB-01251) at 1/300 dilution Secondary: IRDye800CW Goat Anti-Rabbit IgG at 1/20000 dilution Predicted band size: 114 kDa Observed band size: 114 kDa
	2. Sample: A549 (Human) Cell Lysate at 30 µg MCF-7 (Human) Cell Lysate at 30 µg Primary: Anti-NOD2 (TMAB-01251) at 1/300 dilution Secondary: IRDye800CW Goat Anti-Rabbit IgG at 1/20000 dilution Predicted band size: 114 kDa Observed band size: 114 kDa



Application:	WB
Recommended	WB: 1:500-2000

A DRUG SCREENING EXPERT

Properties

Stability & Storage: Store at -20°C or -80°C for 12 months. Avoid repeated freeze-thaw cycles.

Shipping: Shipping with blue ice.

Antigen Details

Immunogen: KLH conjugated synthetic peptide: human CARD15

Antigen Species: Human

Gene ID: 64127

Uniprot ID: Q9HC29

Synonyms: CARD15;NOD2;Caspase recruitment domain-containing protein 15;Nucleotide-binding oligomerization domain-containing protein 2

Biology Area: CARD Family

Research Background

Defects in NOD2 are the cause of sarcoidosis early-onset (EOS) . EOS is a form of sarcoidosis manifesting in children younger than 4 years of age. Sarcoidosis is an idiopathic, systemic, inflammatory disease characterized by the formation of immune granulomas in involved organs. Granulomas predominantly invade the lungs and the lymphatic system, but also skin, liver, spleen, eyes and other organs may be involved. Early-onset sarcoidosis is quite rare and has a distinct triad of skin, joint and eye disorders, without apparent pulmonary involvement. Compared with an asymptomatic and sometimes naturally disappearing course of the disease in older children, early-onset sarcoidosis is progressive and in many cases causes severe complications, such as blindness, joint destruction and visceral involvement.

Inhibitor · Natural Compounds · Compound Libraries · Recombinant Proteins

This product is for Research Use Only · Not for Human or Veterinary or Therapeutic Use

Tel:781-999-4286 E_mail:info@targetmol.com Address:34 Washington Street,Wellesley Hills,MA 02481