

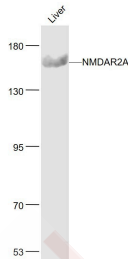
Anti-NMDAR2A Polyclonal Antibody

Product Details

Ig Type:	IgG
Reactivity:	Human (predicted:Mouse,Rat)
Molecular Weight:	Theoretical: 163 kDa. Actual: 38 kDa.
Purification:	Protein A purified

Applications

Sample:	Liver (Mouse) Lysate at 40 µg
Verified Activity:	Primary: Anti-NMDAR2A (TMAB-01248) at 1/1000 dilution Secondary: IRDye800CW Goat Anti-Rabbit IgG at 1/20000 dilution Predicted band size: 163 kDa Observed band size: 163 kDa



Application:	WB
Recommended	WB=1:500-2000

Properties

Stability & Storage:	Store at -20°C or -80°C for 12 months. Avoid repeated freeze-thaw cycles.
Shipping:	Shipping with blue ice.

Antigen Details

Immunogen:	KLH conjugated synthetic peptide: human NMDAR2A
Antigen Species:	Human
Gene ID:	2903
Uniprot ID:	Q12879
Synonyms:	N methyl D aspartate receptor channel, subunit epsilon 1;NR2A;NR 2A;HNR2A;NMDE1;N Methyl D Aspartate Receptor Subtype 2A;NMDA receptor subtype 2A;OTTHUMP00000174531;NMDA Receptor Type 2A;Glutamate [NMDA] receptor subunit epsilon 1;NMDAR 2A;NMDAR2A;GRIN 2A; Glutamate receptor ionotropic N methyl D aspartate 2A;Glutamate receptor;GRIN2A; OTTHUMP00000160135
Biology Area:	NMDA Receptors

Research Background

N-methyl-D-aspartate (NMDA) receptors are a class of ionotropic glutamate-gated ion channels. These receptors have been shown to be involved in long-term potentiation, an activity-dependent increase in the efficiency of synaptic transmission thought to underlie certain kinds of memory and learning. NMDA receptor channels are heteromers composed of the key receptor subunit NMDAR1 (GRIN1) and 1 or more of the 4 NMDAR2 subunits: NMDAR2A (GRIN2A), NMDAR2B (GRIN2B), NMDAR2C (GRIN2C) and NMDAR2D (GRIN2D). Alternatively spliced transcript variants encoding different isoforms have been found for this gene. [provided by RefSeq, Aug 2008]

Inhibitor · Natural Compounds · Compound Libraries · Recombinant Proteins

This product is for Research Use Only · Not for Human or Veterinary or Therapeutic Use

Tel:781-999-4286 E_mail:info@targetmol.com Address:34 Washington Street,Wellesley Hills,MA 02481