

Anti-NLRP3 Polyclonal Antibody 4

Product Details

Ig Type: IgG
Reactivity: Mouse (predicted:Human,Rat)
Molecular Weight: Theoretical: 114 kDa.
Purification: Protein A purified

Applications

Blank control (black line): Raw264.7. Primary Antibody (green line): Rabbit Anti-NALP3/CIAS1 antibody (TMAB-01246)

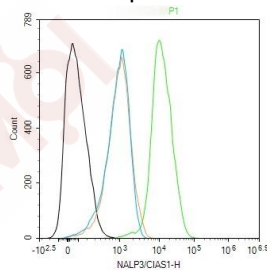
Dilution: 1 µg/Test;

Secondary Antibody (white blue line): Goat anti-rabbit IgG-AF488

Dilution: 0.5 µg/Test.

Verified Activity: Isotype control (orange line): Normal Rabbit IgG
 Protocol

The cells were fixed with 4% PFA (10 min at room temperature) and then permeabilized with 90% ice-cold methanol for 20 min at -20°C, The cells were then incubated in 5% BSA to block non-specific protein-protein interactions for 30 min at room temperature. Cells stained with Primary Antibody for 30 min at room temperature. The secondary antibody used for 40 min at room temperature.



Application: FCM
Recommended: FCM: 1ug/Test

Properties

Stability & Storage: Store at -20°C or -80°C for 12 months. Avoid repeated freeze-thaw cycles.
Shipping: Shipping with blue ice.

Antigen Details

Immunogen:	KLH conjugated synthetic peptide: human Cryopyrin
Antigen Species:	Human
Gene ID:	114548
Uniprot ID:	Q96P20
Synonyms:	Angiotensin/vasopressin receptor AII/AVP-like;NACHT, LRR and PYD domains-containing protein 3;NALP3;CIAS1;C1orf7;Caterpillar protein 1.1 (CLR1.1);PYPAF1;Cold-induced autoinflammatory syndrome 1 protein;Cryopyrin;LRR and PYD domains-containing protein 3; NLRP3;PYRIN-containing APAF1-like protein 1
Biology Area:	TNF,Inflammatory mediators,Macrophage / Inflamm.,NFkB Pathway

Research Background

May function as an inducer of apoptosis. Interacts selectively with ASC and this complex may function as an upstream activator of NF-kappa-B signaling. Inhibits TNF-alpha induced activation and nuclear translocation of RELA/NF-KB p65. Also inhibits transcriptional activity of RELA. Activates caspase-1 in response to a number of triggers including bacterial or viral infection which leads to processing and release of IL1B and IL18. Subcellular Location : Cytoplasm.

Inhibitor · Natural Compounds · Compound Libraries · Recombinant Proteins

This product is for Research Use Only· Not for Human or Veterinary or Therapeutic Use

Tel:781-999-4286 E_mail:info@targetmol.com Address:34 Washington Street,Wellesley Hills,MA 02481